



# LIBRARY NEWS

For the University of Florida Faculty

Vol. 19 Issue 2 Fall 2008

## Smathers Libraries to sponsor **GIS Day** Nov. 19

The George A. Smathers Libraries will host an all-day event to showcase the use of geographic information systems (GIS) to the academic community and the public on Wednesday, November 19, beginning at 9:30 a.m. in Smathers Library, Room 1A.

GIS Day is a global event that celebrates GIS and is held each year on the Wednesday of National Geographic Society's Geography Awareness Week (November 16-22 in 2008). The Smathers Libraries will provide this opportunity for those curious about GIS to see its applications in action. It will also allow the many departments on campus who use GIS to come together to share the research projects on which they are working. Most importantly, it will highlight the many services and resources in the libraries' Spatial Information Services Unit available for researchers using GIS.

The event will include speakers from a number of different departments across campus as well as a special guest from the St. Johns River Water Management District who will talk about using GIS in litigation. After the morning presentations will be a cake-cutting ceremony and opening of the exhibit hall area. This area will

include information about the many resources in the libraries that support GIS from data and books to GIS consulting services. Also offered will be demonstrations of GIS software, as well as booths set up by various organizations across campus and in the community that use GIS or related technologies.

allows people to use GPS technology to locate hidden clues and treasures. Everyone, no matter what level of previous experience, is encouraged to sign up for this event.

For a complete schedule and list of exhibits for GIS Day, please visit <http://www.uflib.ufl.edu/msl/gisday2008/> or call (352) 273-2825.

*Carol McAuliffe  
Head, Map and Imagery Library*



In addition, there will also be a poster session from 12:30-1:00. The posters will showcase how GIS is used in actual research at the University of Florida. The day will conclude with a geocaching event from 2:30-4:00. Pre-registration is required for geocaching on the GIS Day Web site. Geocaching is a popular hobby that

### Inside

- 2 Course Reserves; NaNoWriMo "Write-In"
- 3 Library mentors; New link resolver; extended hours
- 4 Upcoming Exhibits; Access World News
- 5 Jim Liversidge Collection; New online finding guide for programs and playbills
- 6 Photoplay Editions
- 7 Bess de Farber, new grants manager; Elegance of Science art contest
- 7 Let's Talk About It! Jewish literature discussions; Baldwin Library's historical marker

## Spring 2009 Course Reserves submissions now being taken

Submissions for the Spring 2009 semester Course Reserves are now being taken, so get a head start on the semester rush.

Course Reserves are supplemental readings that are made available to students both in electronic and hard copy formats. Faculty may request materials for their courses via the Ares system. These include articles, scanned chapters of books, DVD's, VHS's, CD's, books, personal materials, lecture slides, etc.

Scanned materials are subject to copyright evaluation prior to being placed on reserve. For more information on our copyright guidelines, please view the brochure that is available on the Ares Web site at <https://ares.uflib.ufl.edu/images/Course-Reserves0708.pdf>.

The Ares course reserve system has received a new feature in its latest version update: Tags! Tagging allows instructors to sort their materials by labeling them for students.

A series of training dates for faculty are scheduled during December and January to demonstrate how to use the Ares system. In the faculty training, instructors will learn how to create an account, be shown all the features of Ares, learn how to renew previous course material, and learn how to submit new materials and check their status online.

### Training Dates, Times and Location:

Library West Room, Room 211 (10:00 a.m. – 11:00 a.m.)

December: 16, 18, 23

January: 6, 8, 13, 15

For those not able to attend one of the training sessions and not familiar with the system, please refer to the one-minute training videos at <https://ares.uflib.ufl.edu/videos.html>

Would your department like a personalized training session? Call the Course Reserves office at (352) 273-2520 or e-mail [eres@uflib.ufl.edu](mailto:eres@uflib.ufl.edu) to schedule a representative to come to your department meeting for a presentation.

*Natalie Lane  
Course Reserves*

**Ares Web site:  
<https://ares.uflib.ufl.edu>**

### Top ten Course Reserves users by department

1. English
2. Political Science
3. Art & Art History
4. History
5. Sociology
6. Education – Teaching & Learning
7. Anthropology
8. Romance Languages & Literatures
9. Latin American Studies
10. All other departments (48%)



## Libraries to sponsor NaNoWriMo "Write-In"

Every November for the past six years, people from all over the nation have pledged to write a 175-page (50,000 word) novel in just one month for National Novel Writing Month (NaNoWriMo), <http://www.nanowrimo.org/>.

The George A. Smathers Libraries, will host a middle-of-the-month "Write-In" to support NaNoWriMo writers as well as those interested in learning more about the month-long event. This special write-in will be Wednesday, November 19, 5:00 p.m. – 10:00 p.m. in the InfoCommons@West on the third floor of Library West.

Several local authors will be on hand to lend their support to the NaNoWriMo writers. M.D. Abrams, a north Florida mystery writer, will provide a motivational lecture and urban fantasy writer Jeanine Frost will provide a podcast interview which will be played that evening.

Smathers Libraries will also host a "Final Push Write-In" on November 30, from 3:00 p.m. – 10:00 p.m. in the InfoCommons@West on the third floor of Library West.

Direct questions about the event to Stacey Ewing, [staewin@uflib.ufl.edu](mailto:staewin@uflib.ufl.edu), or Laura Jordan, [laujord@uflib.ufl.edu](mailto:laujord@uflib.ufl.edu).

*Stacey Ewing  
Humanities and Social Sciences Librarian*

## Library mentors connect with First-Year Writing class students

This year's First-Year Writing classes have a little more personalized help when it comes to research: library mentors. Mentors are connecting with students to better ensure they learn sound methods of performing research instead of waiting for them to come to librarians.

This project is entirely new to library staff. Formerly, ENC 1101 and 1102 classes visited the library for a session of general bibliographic instruction that often did not coincide with a time when the students were working on a project that required outside resources. This new, personal touch empowers students to seek assistance and learn how to use their library resources.

After planning the mentoring program over the course of last spring and summer, the project commenced in late August when the ENC sections were divided among the library mentors. Then meetings and e-mails between ENC faculty and library mentors opened the door to this new way of reaching students.

Library mentors were tasked with the mission to portray the library as an approachable resource for First-Year Writing faculty and students seeking personalized help. The mentors developed a number of resources to help with the transition to the new program, such as the First-Year Writing LibGuide (<http://libguides.uflib.ufl.edu/enc>) and the UWP/Library Mentor Blog (<http://blogs.uflib.ufl.edu/enc>).

The students e-mail the library mentors with questions as they proceed with their projects. Faculty contact library mentors for advice and instruction on how to help their students succeed with research. Mentors visit their classrooms. Students attend Library Labs where they receive guided help from library mentors. Library mentors hosting the labs know what kind of projects the students are working on, and they know how best to help.

*Missy Shoop  
Humanities and Social Sciences Librarian*

## New link resolver added

On October 8 the libraries replaced SFX with 360 Link as the article link resolver. 360 Link underwent testing for several months and has several advantages over SFX. The biggest change that users may notice is that if full text is available, one-click will take users right to the article. Fewer inaccurate links, better database choices and an up-to-date knowledge base are all critical, but rarely noticed features of a first rate article link resolver. End users will find all of these features in 360 Link. This change should require little or no change to library instruction handouts or presentations. While the accuracy and timeliness of full-text retrieval should improve with 360 Link, it's likely that the only apparent change to end-users will be the one-click functionality.

Users who prefer to choose the full-text database themselves still have that option by clicking a link in the "helper window."

In addition to working with QuickSearch, 360 Link also works from within many of the library databases as well as Google Scholar.

If any problems with 360 Link are encountered, please send a message to the Electronic Resources Unit help desk at [er-help@uflib.ufl.edu](mailto:er-help@uflib.ufl.edu).

*Christian Poehlmann  
Electronic Resources Librarian*

## Library West and Marston Science Library to be open extended hours for exams

Library administration recently met with student government representatives to discuss continuing the extended hours in both Library West and Marston Science Library at the end of the fall semester. The extended hours will be as follows:

**Saturday, Dec. 6 through Wednesday, Dec.17 – 8:00 a.m. – 4:00 a.m.**  
**Thursday, Dec. 18 – 8:00 a.m. – 1:00 a.m. and**  
**Friday, Dec. 19 – 8:00 a.m. – 6:00 p.m.**

Starbucks in Library West will be open all hours that Library West is open. After dark, members of the UF community may request a walking escort or a ride with Student Nighttime Auxiliary Patrol (SNAP) via telephone at 392-SNAP (392-7627).

## Visit the Smathers Library Bookstore

Quality used books, cd's,  
record albums,  
USGS topos at low prices

**Smathers Library (East) first floor**  
**Open Tues-Fri 10:00-3:00**



# Upcoming EXHIBITS

## SPECIAL COLLECTIONS EXHIBITS

### Buttons, Badges, and Bumper Stickers: 160 Years of Presidential Campaigns

November 3 – December 15, 2008  
Smathers Library Exhibit Gallery,  
Second Floor

Sponsored by the Stewards of Florida History and the UF Department of Political Science (Political Campaigning Program)

“Buttons, Badges and Bumper Stickers” illustrates some key components of presidential election campaigns as they have affected Florida, the nation, and the candidates themselves. The exhibit introduces viewers to the world of campaign memorabilia, from the early ribbons, badges and watch fobs worn to state and national conventions to recent novelty pins.

Featured items include ribbons from the campaigns of Andrew Jackson (1828) and Abraham Lincoln (1860) and an example of a torch carried in turn-of-the-century torch light parades. While the exhibit contains many campaign standards and oddities from candidates who won through to the White House, it also reminds us of the forgotten or

unsuccessful bids by Al Smith (first Catholic candidate), James Cox (later founder of Cox Communications) and Barry Goldwater.

The exhibit showcases pins and badges associated with campaign firsts, the evolution of bumper stickers as vehicles for espousing a political cause or candidate, and the rise of negative campaigning. The role of Florida in national politics – exemplified in the stormy and controversial voting returns of the 1876 and 2000 presidential elections – is also prominent. An actual West Palm Beach voting booth complete with butterfly ballot is showcased.

**Cuba, Past, Present and Future**  
January 9 – January 23, 2009  
Smathers Library Exhibit Gallery,  
Second Floor

**Sunday, January 11, 2009**

4:00-7:00 p.m. Reception and Discussion, Smathers Library  
*Please RSVP to Gail Crawford,*  
*(352) 273-2505*



### MARSTON SCIENCE LIBRARY DISPLAY CASE SCHEDULE

**2008**

November-December: Harn:  
Promises of Paradise Exhibition &  
Holiday Sale display

**2009**

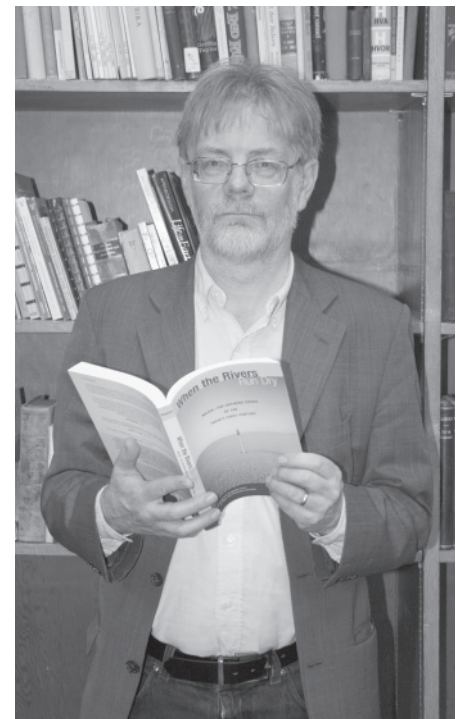
January: Geology  
February: Charles Darwin's  
Bicentenary Celebration  
March: Hindu Students' Council  
April: Office of Sustainability

The display case is available beginning with May 2009 for displays by university-affiliated groups. For display case policies see:  
<http://www.uflib.ufl.edu/msl/about/policies/display.html>

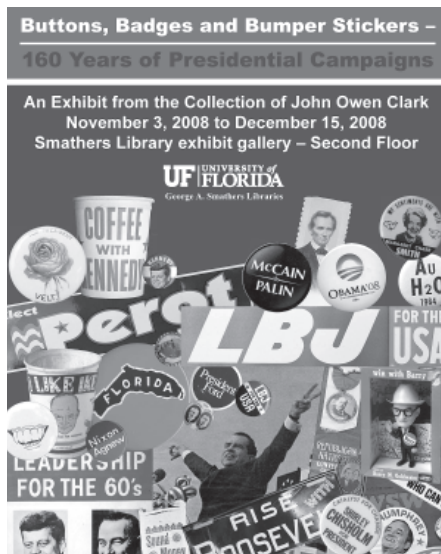
## Libraries now have Access World News from NewsBank!

Access World News includes almost 1,200 U.S. titles (primarily newspapers) and over 1,000 international news sources. There are over 50 Florida newspapers, including *The Miami Herald*, *Tallahassee Democrat*, *Florida Today*, *Pensacola News Journal* and a number of papers to which the libraries previously had no electronic access. It has a straightforward and easy-to-use search interface which will make it a good choice for many of the newspaper titles duplicated in Lexis or Factiva as well. Access at <http://infoweb.newsbank.com>

*Patrick Reakes*  
Head, Journalism and  
Communications Library



Fred Pearce, author of *When the Rivers Run Dry*, the 2008 Common Reading Program selection, spoke at a reception in his honor at Smathers Library on October 15.



## Jim Liversidge Collection Dedicated

On Monday, August 25, 2008, the Jim Liversidge Collection – the newest addition to the Department of Special and Area Studies Collections Popular Culture Collections unit – was formally dedicated at a reception in Smathers Library. This followed the summer-long exhibit “The Passing Parade: A Baby Boomer Collects” which provided highlights of the collection from politics, television, theatre, film, music, sports and day-to-day current events of the past 50 years. An article about the reception appeared in the *Independent Florida Alligator* at <http://tinyurl.com/66tfps>

The collection began in 1963 as a third grade homework assignment and grew to lifetime collecting passion that now consists of close to seven thousand individual pieces (autographs, scrapbooks, photos, programs, posters, campaign buttons, sheet music, newspaper clippings, audio recordings, VHS and DVD films, artifacts and over 400 book titles). Special attention is reserved for “wide screen” promotion and gimmicks of the 1950s and early 1960s (Cinerama, Cinemascope, 3-D, etc.) and ephemera related to the 1963 Stanley Kramer production and cast of “It’s a Mad, Mad, Mad, Mad World.” A detailed finding aid to the contents of the collection is available at <http://www.uflib.ufl.edu/spec/belknap/liversidge.htm>

Liversidge has worked for the UF Libraries for 15 years and currently serves as curator of the Popular Culture Collections. The libraries are most grateful that he has decided to donate his fascinating and entertaining collection of artifacts and materials to the UF Libraries where they will be permanently available to researchers of the era.

*Rich Bennett  
Chair, Special and Area Studies Collections*

## Programs, playbills and surprises in the Belknap Collection for the Performing Arts

### New online finding aid uncovers 225 years of stage history and lore

Since the establishment of the Sara Yancey Belknap Collection for the Performing Arts as a dance archive in 1958, the holdings in the Department of Special and Area Studies Collections have grown steadily to include ephemera and artifacts from the worlds of theatre, film, music, radio and television. The largest single area of collecting in the archive of performing arts is the Theatre Playbill and Program Collection which until recently has never been browsable by the general public. For the first time, this vast and eclectic research treasure is now accessible, online, through a detailed and entertaining finding guide created for the Belknap Web page by the curator of Popular Culture Collections: <http://web.uflib.ufl.edu/spec/belknap/ufplaybills.htm>



The extensive and time-consuming project (18 months in the making!) began with the transfer of approximately 9,500 individual play titles into new acid-free folders and 111 storage boxes (148 linear feet of shelf space). Each folder contains and represents multiple professional and amateur productions resulting in over 100,000 individual programs, playbills and miscellaneous promotional items of interest to researchers, historians and theatre aficionados. Play titles in the finding guide are listed alphabetically and include descriptive historical notes (dates for the original production, cast listings, playwrights, composers, producers, directors, choreographers, song titles, etc) as well as tidbits of show business trivia scattered throughout the text.

The patron using this research aid will find a wealth of theatrical history and production information, but will also discover early performances by film stars Cary Grant (billed under his real name – “Archie Leach”) and John Garfield (billed under his real name “Julius Garfinkle”). A researcher, with a keen eye, will also uncover stage performances by writers George S. Kaufman, Thornton Wilder and Sinclair Lewis or attempts at theatrical immortality by businessman Dean Witter and Dorothy Brando (Mother of Marlon Brando and a respected acting coach).

This vast and colorful collection of vintage primary source material will educate, entertain and surprise the patron, researcher and student at the University of Florida (and beyond) and the newly created finding guide will introduce the community to a valuable (but undiscovered) historical resource in the Department of Special and Area Studies Collections in the George A. Smathers Libraries. For more information, please contact Jim Liversidge at [jimliv@uflib.ufl.edu](mailto:jimliv@uflib.ufl.edu) or call (352) 273-2759.

*Jim Liversidge  
Curator of Popular Culture Collections*



# Photoplay Editions: a colorful promotional tool spanning silent and sound films

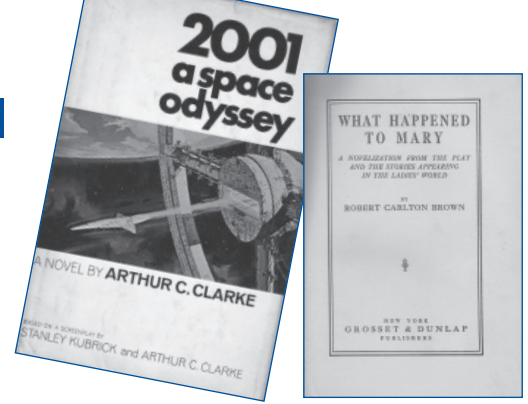
Scattered throughout the Popular Culture Collections in the George A. Smathers Libraries are many examples of motion picture “tie-ins” promoting films and the actors starring in the celebrated productions. Posters, lobby cards, press books, press kits, toys, sheet music and miscellaneous artifacts and ephemeral items, preserved in the performing arts depository of the Department of Special and Area Studies Collections, provide information and insight into the vast production and publicity machine set in motion to alert, enlighten and influence an eager ticket buying populace.

One of the earliest promotional movie tie-ins was the photoplay edition, defined by historian Arnie Davis (in his definitive history of the subject, *Photoplay Editions and Other Movie Tie-in Books*) as “referring to

a link between a book and a movie defined by the use of photographs, artwork or written credit relating the movie title, movie production company and/or movie cast to the text of the book.”

In the past year, a rare collection of 367 photoplay editions assembled by distinguished private collector, Mark H. Wolff of Studio City, California, was added to the Belknap Collection for the Performing Arts. Many of the items are first editions and the collection is a rare presentation of a now defunct promotional art form.

Most of the hardcover publications are in good to satisfactory condition complete with the historic dust jackets intact. However, it is almost impossible to find the earlier silent film editions in a dust wrapper, but this portion of the collection represents a rare compilation of



photoplays from the silent films of the 1910s and 1920s – many of the films themselves, sadly lost forever.

The collection, now catalogued and available for patron research, does include the “first crossover” edition of *What Happened to Mary* from 1913. The collection includes a parade of major writers (Charles Dickens, Nathaniel Hawthorne, Ernest Hemingway, John Steinbeck, Somerset Maugham, Raymond Chandler, etc.) and noted illustrators who provided classic artwork for the dust jackets (Mach Tey, Alfred Skrenda, Norman Rockwell, etc.). For more information please contact Jim Liversidge at jimliv@uflib.ufl.edu or call at (352) 273-2759.

*Jim Liversidge*  
Curator of Popular Culture Collections



Thank you for your support!

Name \_\_\_\_\_  
Address\* \_\_\_\_\_  
City \_\_\_\_\_ State \_\_\_\_\_ Zip \_\_\_\_\_  
Home Phone \_\_\_\_\_ Business Phone \_\_\_\_\_  
Yes. I/we wish to support the George A. Smathers Libraries with a gift of \$ \_\_\_\_\_

Please make checks payable to the University of Florida Foundation, Inc. and mail to Sam Huang, associate dean for advancement and development, George A. Smathers Libraries, University of Florida, PO Box 117000, Gainesville, FL 32611-7000.

To pay by credit card please fill out the following:  MasterCard  Visa  Discover  American Express  
\*NOTE: If using a credit card, the address you use above must match the credit card billing address.

Credit Card No. \_\_\_\_\_ Exp. Date \_\_\_\_\_  
Cardholder's Name \_\_\_\_\_  
Cardholder's Signature \_\_\_\_\_

Employees of the University of Florida may wish to take advantage of the payroll deduction process to provide their level of support. Check here for payroll deduction.

For more information contact Sam Huang at (352) 273-2505 or Huang888@ufl.edu

Please use my gift for the following:

- Smathers Libraries Purchase Fund
- Special & Area Studies Collections
  - Latin American Collection
  - Price Library of Judaica
  - African Studies Collection
  - Asian Studies Collection
  - P.K. Yonge Library of Florida History
  - Baldwin Library of Historical Children's Literature
  - Belknap Performing Arts Collection
  - Rare Books
  - Manuscripts
  - University Archives
- Architecture & Fine Arts Library
- Education Library
- Journalism & Communications Library
- Map & Imagery Library
- Music Library
- Marston Science Library
- Digital Library Center
- Other
- Please send information about making a planned gift/bequest

Your gift may be eligible for a charitable contribution deduction.



## Meet Bess de Farber: Smathers Libraries' new grants manager

**B**ess de Farber, MNM, CPF (Master of Nonprofit Management, Certified Professional Facilitator) became the libraries' grants manager on October 6. In this newly-created position, de Farber will manage the grants program through partnering with Smathers Libraries' faculty and staff in the pursuit, acquisition and completion of grants-related projects. Key to the success of this program will be providing collaboration development and planning support.

In this capacity, she will work with staff and faculty to facilitate new libraries' partnerships with university faculty and departments, as well as local, regional and national organizations for project and revenue generating opportunities.

de Farber says that this type of hands-on grants management position doesn't exist in most academic libraries. Traditionally, both academic and public libraries have been self-sufficient. Only recently, because of increases in costs for electronic and other library resources combined with budget reductions, many more libraries have begun seeking grant funds to support the "new" library work—organizing and/or creating greater accessibility to existing information resources.

"It's not all about books anymore," said de Farber, "it's about what we can do with the information we have and how we can make it more accessible to users." de Farber went on to say that regarding "new" library work, has no specific funding source. Regardless, librarians are indispensable to this process because they are specifically skilled in how to find and use information, and how to best dispense it to others.

A classically trained clarinetist, de Farber uses her collaborative background in her new position. She points out that wind players usually perform in groups, requiring a variety of communication, facilitation, negotiation and team building skills in order to produce the most desirable musical result. The same skills are necessary to support those seeking to create fundable and engaging proposals



Most recently, de Farber was the grants and revenue manager at the University of Arizona Libraries. She has previous experience in a variety of grants management and consulting projects ranging from arts education planning for Palm Beach County School District to acquiring funding to digitize an endangered collection in Afghanistan. She holds a master's degree in nonprofit management from Florida Atlantic University and a bachelor's degree in music from the University of Southern California. She has been a featured presenter/speaker on topics including the art of grant proposal preparation and "speed dating" for asset mining and collaboration development.

"It is an extremely creative experience to work in the grants world. If you work with lots of people and lots of ideas, it can be very gratifying," said de Farber.

*Barbara Hood  
Public Information Officer*

## Elegance of Science Contest

The University of Florida's Marston Science Library and its partners, the Health Science Center Libraries, the Architecture & Fine Arts Library, and the Alumni Association are holding the first ever "Elegance of Science" contest. This contest will showcase the spectacular research happening at the University of Florida in an imaginative and unique format.

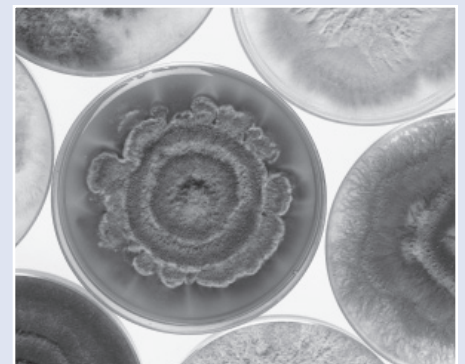
Current faculty, students and staff of the University of Florida are being asked to submit artistic two-dimensional representations of their scientific research. A panel of judges will award cash prizes to first, second and third place winners. Successful entries will creatively merge science and art.

An opening reception to honor the winning artists will be held in the Marston Science Library during February 2009. Additionally, winning entries will be displayed at the Marston Science Library and the Health Science Center Library, and the contest Web site during the spring 2009 semester.

Entry deadline is December 19, 2008. For further details or to submit an entry see the contest Web site:

<http://www.uflib.ufl.edu/msl/art>

*Amy Buhler  
Science Librarian*



## Let's Talk About It! *Jewish Literature: Identity and Imagination*

The George A. Smathers Libraries announces the return of the "Let's Talk About It: Jewish Literature – Identity and Imagination" series. These series explore Jewish literature and culture through scholar-led discussions of contemporary and classic books on a common theme. The library received funding to sponsor two sessions in the 2008-09 school year. The spring series will take a look at *Modern Marvels: Jewish Adventures in the Graphic Novel*.

### Spring 2009 discussion schedule

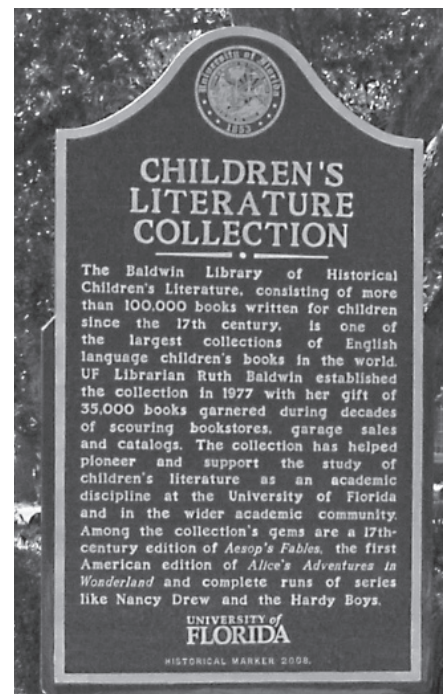
#### Modern Marvels: Jewish Adventure in the Graphic Novel

All discussions are held in Smathers Library, Room 1A, from 3:30-5:00 p.m.

- Feb 1 *A Contract with God*, Will Eisner  
Feb 15 *The Complete Maus: A Survivor's Tale*, Art Spiegelman  
Mar 1 *Julius Knipl, Real Estate Photographer*, Ben Katchor  
Mar 15 *The Quitter*, Harvey Pekar (art by Dean Haspiel)  
Mar 29 *The Rabbi's Cat*, Joann Sfar

For additional information, please contact Chelsea Dinsmore at [chedins@uflib.ufl.edu](mailto:chedins@uflib.ufl.edu) or (352) 273-0369. Further information about the University of Florida Libraries can be found at <http://www.uflib.ufl.edu>. For more information about Nextbook programs see <http://www.nextbook.com>

*Chelsea Dinsmore*  
International Documents Librarian



The Baldwin Library of Historical Children's Literature received the university's third historical marker in a ceremony on October 2. The marker is located in the courtyard on the west side of Smathers Library. The 103,000 volume Baldwin Library is cited for the depth of its collection and for pioneering and supporting the study of children's literature as an academic discipline.

University of Florida  
George A. Smathers Libraries  
P.O. Box 117000

Gainesville, FL 32611-7000  
(352) 273-2505; Fax: (352) 392-7251  
<http://blogs.uflib.ufl.edu/news/category/librarynews/>

Is there another person in your department who would like a copy of Library News? If so, please notify us at: [bhood@uflib.ufl.edu](mailto:bhood@uflib.ufl.edu)

#### Library News Editorial Board

Aimee Barrett, Valrie Davis, Nita Ferree, Laura Jordan, Brian Keith, Natalie Lane, Jim Liversidge, Carol McCauliffe, Tom Minton, Elizabeth Outler, Richard Saltzburg, Jay Wiese  
Barbara Hood, editor/designer

*An equal opportunity institution*  
Cover photo: Education Library

**UF** | George A. Smathers  
Libraries  
UNIVERSITY of FLORIDA

P.O. Box 117000  
Gainesville, FL 32611-7000