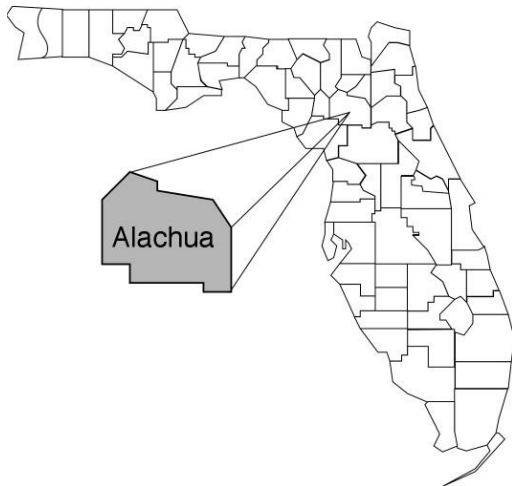


# Alachua

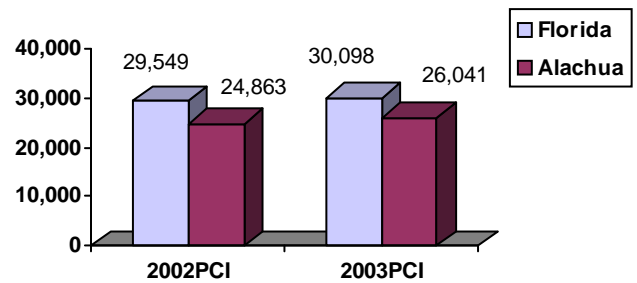
## Community Data\*



### Population Density (per Sq. Mile):

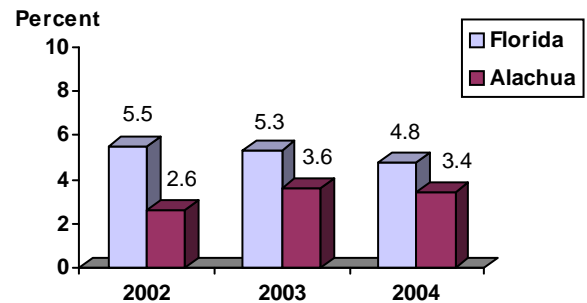
Florida	325	
Alachua	270	Rank in State: 21

### Per Capita Income (\$):

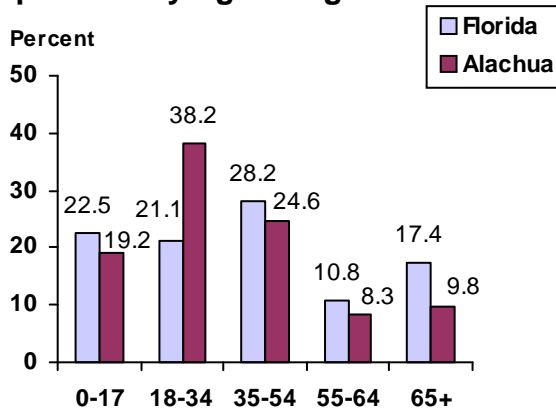


<b>County Seat:</b> Gainesville	pop.	117,754
<b>County Land Area (Sq. Miles):</b>		874.3
<b>County Water Area (Sq. Miles):</b>		94.9
<b>Population (2004):</b>		236,174
Projected (2010):		259,704

### Unemployment Rate:



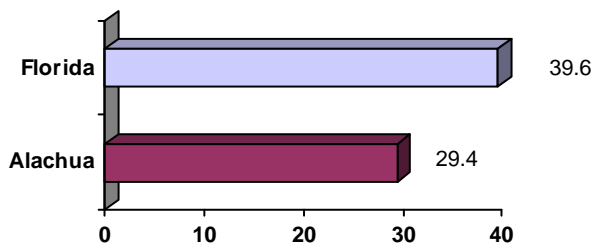
### Population by Age Range:



### Crime Rate:

	Rate per 100,000 Pop.	Percent Change 2003 to 2004
Florida	4,855.3	-6.0
Alachua	4,757.9	-9.6

### Median Age:



### Births to Unwed Teenage Mothers:

	Number of Live Births	Births to Unwed Teen Mothers (number)	Births to Unwed Teen Mothers (percent)
Florida	218,045	20,449	9.4%
Alachua	2,607	226	8.7%

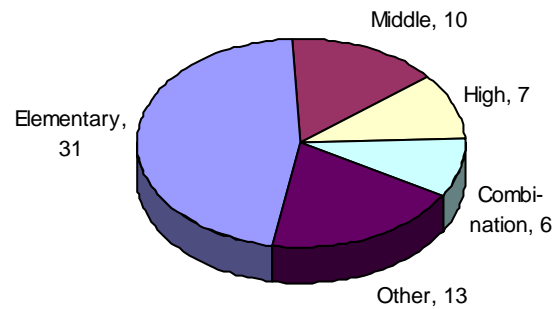
\*Unless otherwise indicated, community data shows Florida Statistical Abstract information for 2004.

# Alachua

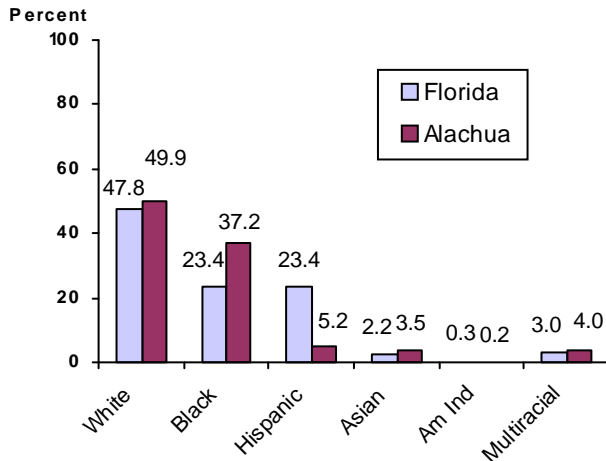
## Education Data\*

**PK-12 Public School Membership:** 29,108  
**Rank:** 25

### Number and Type of Public Schools:



### PK-12 Membership by Race:



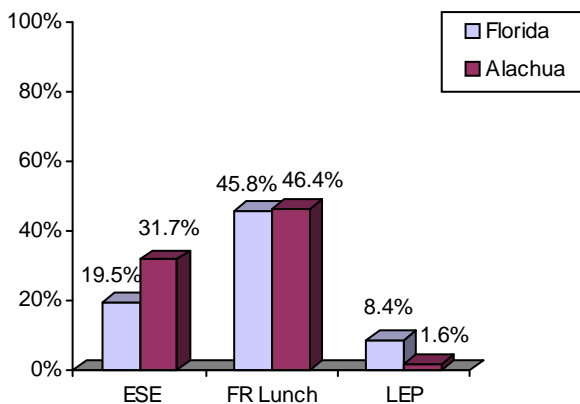
### Average Teacher Salary by Degree Level:

	Bachelor's	Master's	Specialist	Doctorate
Florida	\$39,492	\$47,006	\$55,238	\$53,142
Alachua	\$34,292	\$39,511	\$43,856	\$45,631

All degrees: Florida = \$42,702      Alachua = \$37,633

### Special Needs Populations:

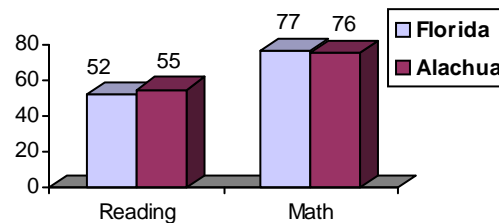
Free/Reduced-Price Lunch, ESE, and LEP Membership as a percentage of Total Membership



### Percentage of Teachers with Degree Beyond Bachelor's: 56.2%

### Student Performance:

Percent Passing Grade 10 Florida Comprehensive Assessment Test



### Administrators-to Staff Ratios

	Administrators to Classroom Teachers	Administrators to Total Staff
Florida	1 : 15.42	1 : 30.20
Alachua	1 : 12.00	1 : 28.77

### Florida Writing Assessment Scores (Scale: 0 - 6)

	Grade 4	Grade 8	Grade 10
Florida	3.9	4.0	3.9
Alachua	4.0	4.1	4.0

### Dropout Rate:

Florida : 3.5%      Alachua : 6.1%

### Per-Student Operating Costs (2004-05):

	Florida	Alachua
Expenditures per FTE	\$6,072	\$6,060

\*Education data is for 2005-06 unless otherwise indicated.