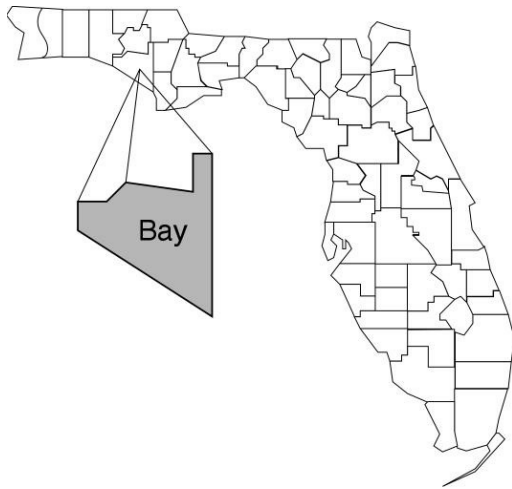


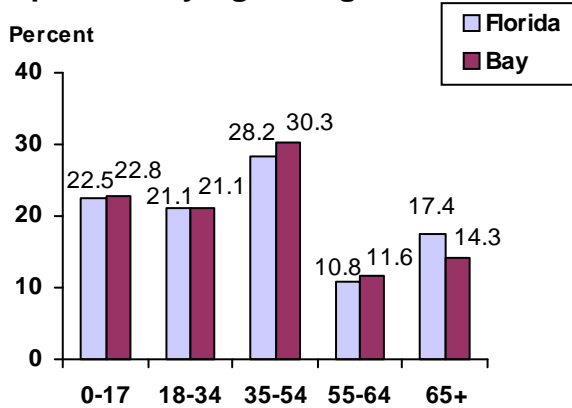
Bay

Community Data*

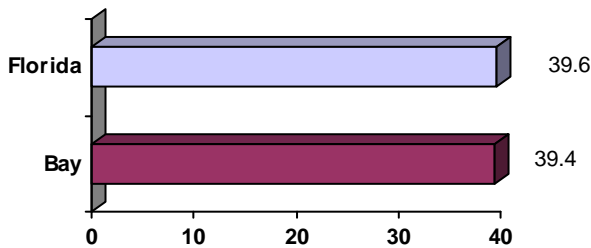


County Seat: Panama City pop. 37,207
County Land Area (Sq. Miles): 763.7
County Water Area (Sq. Miles): 269.6
Population (2004): 158,437
 Projected (2010): 171,755

Population by Age Range:



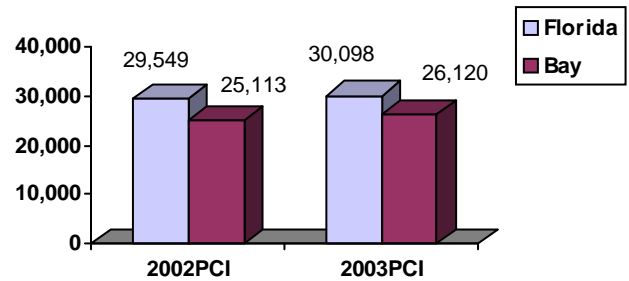
Median Age:



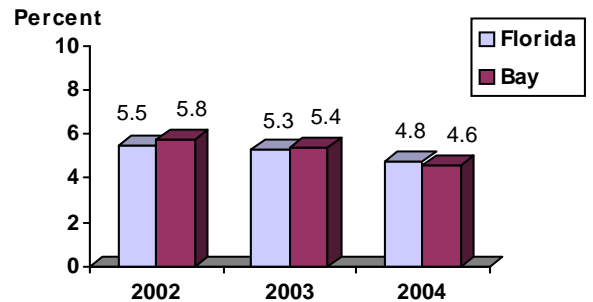
Population Density (per Sq. Mile):

Florida 325
 Bay 207 Rank in State: 28

Per Capita Income (\$):



Unemployment Rate:



Crime Rate:

	Rate per 100,000 Pop.	Percent Change 2003 to 2004
Florida	4,855.3	-6.0
Bay	5,514.5	-13.7

Births to Unwed Teenage Mothers:

	Number of Live Births	Births to Unwed Teen Mothers (number)	Births to Unwed Teen Mothers (percent)
Florida	218,045	20,449	9.4%
Bay	2,236	235	10.5%

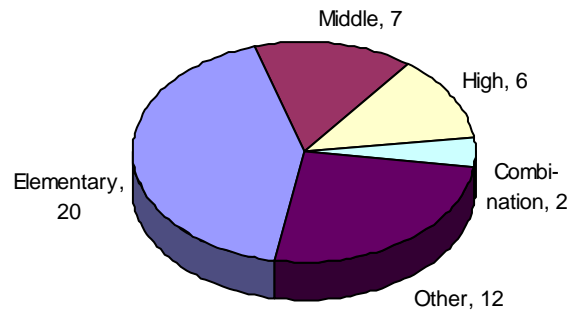
*Unless otherwise indicated, community data shows Florida Statistical Abstract information for 2004.

Bay

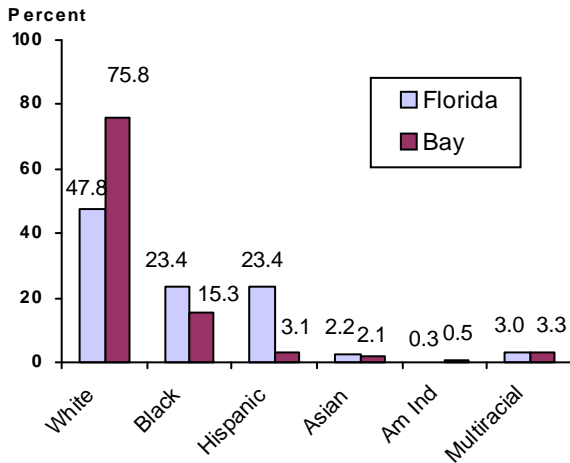
Education Data*

PK-12 Public School Membership: 27,610
Rank: 26

Number and Type of Public Schools:



PK-12 Membership by Race:

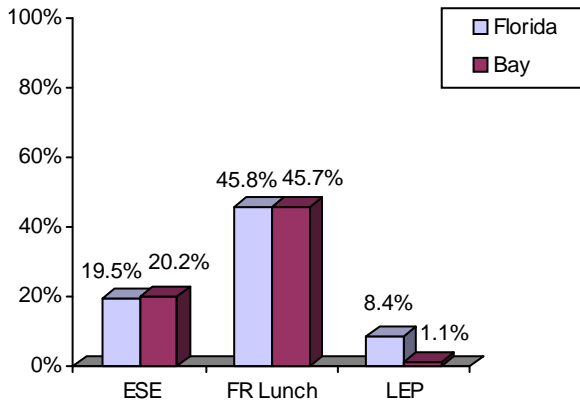


Average Teacher Salary by Degree Level:

	Bachelor's	Master's	Specialist	Doctorate
Florida	\$39,492	\$47,006	\$55,238	\$53,142
Bay	\$37,436	\$43,075	\$45,998	\$45,856
All degrees:	Florida = \$42,702	Bay = \$39,605		

Special Needs Populations:

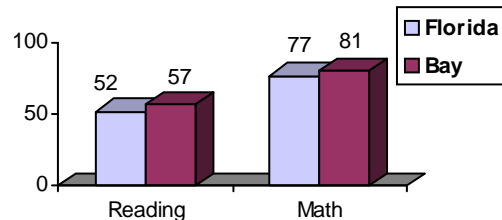
Free/Reduced-Price Lunch, ESE, and LEP Membership as a percentage of Total Membership



Percentage of Teachers with Degree Beyond Bachelor's: 36.5%

Student Performance:

Percent Passing Grade 10 Florida Comprehensive Assessment Test



Florida Writing Assessment Scores (Scale: 0 - 6)

	Grade 4	Grade 8	Grade 10
Florida	3.9	4.0	3.9
Bay	3.6	3.9	3.9

Administrators-to Staff Ratios:

	Administrators to Classroom Teachers	Administrators to Total Staff
Florida	1 : 15.42	1 : 30.20
Bay	1 : 14.48	1 : 28.76

Dropout Rate:

Florida : 3.5% Bay : 2.0%

Per-Student Operating Costs (2004-05):

	Florida	Bay
Expenditures per FTE	\$6,072	\$5,720

*Education data is for 2005-06 unless otherwise indicated.