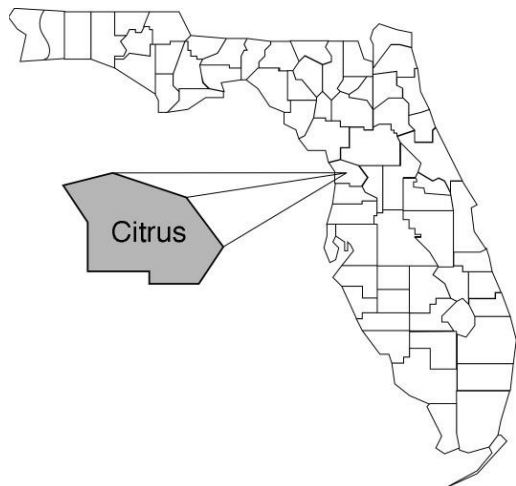


# Citrus

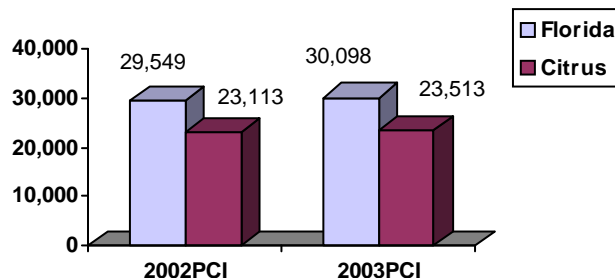
## Community Data\*



### Population Density (per Sq. Mile):

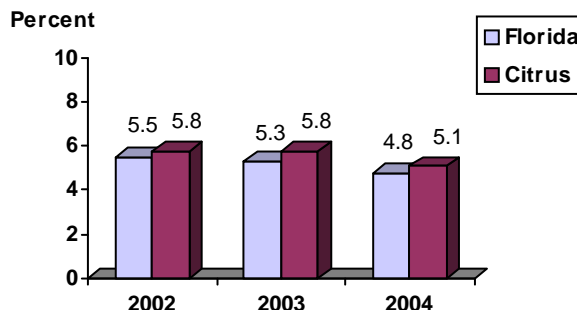
Florida 325  
 Citrus 221 Rank in State: 27

### Per Capita Income (\$):

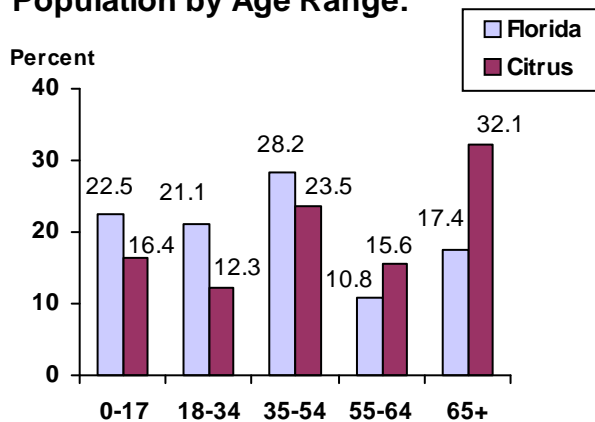


**County Seat:** Inverness pop. 7,105  
**County Land Area (Sq. Miles):** 583.8  
**County Water Area (Sq. Miles):** 189.3  
**Population (2004):** 129,110  
 Projected (2010): 144,772

### Unemployment Rate:



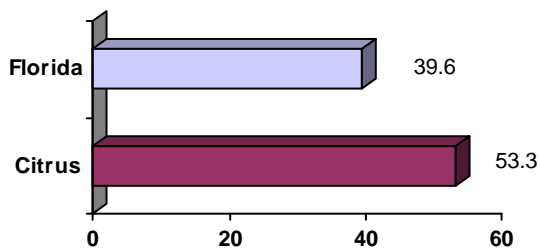
### Population by Age Range:



### Crime Rate:

	Rate per 100,000 Pop.	Percent Change 2003 to 2004
Florida	4,855.3	-6.0
Citrus	2,235.3	-5.6

### Median Age:



### Births to Unwed Teenage Mothers:

	Number of Live Births	Births to Unwed Teen Mothers (number)	Births to Unwed Teen Mothers (percent)
Florida	218,045	20,449	9.4%
Citrus	926	107	11.6%

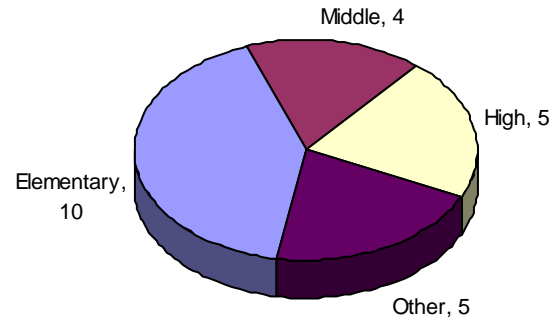
\*Unless otherwise indicated, community data shows Florida Statistical Abstract information for 2004.

# Citrus

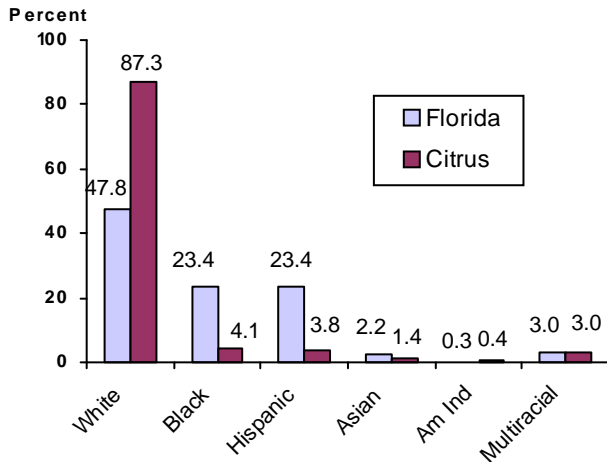
## Education Data\*

**PK-12 Public School Membership:** 15,835  
**Rank:** 33

### Number and Type of Public Schools:



### PK-12 Membership by Race:

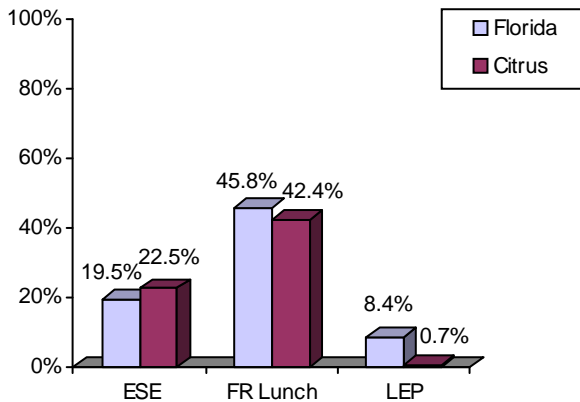


### Average Teacher Salary by Degree Level:

	Bachelor's	Master's	Specialist	Doctorate
Florida	\$39,492	\$47,006	\$55,238	\$53,142
Citrus	\$37,751	\$45,064	\$44,517	\$51,214
All degrees:	Florida = \$42,702	Citrus = \$40,954		

### Special Needs Populations:

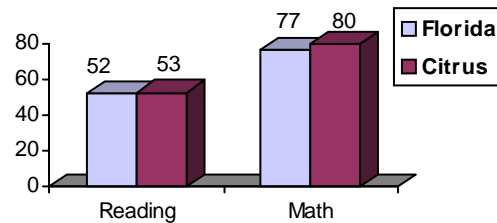
Free/Reduced-Price Lunch, ESE, and LEP Membership as a percentage of Total Membership



### Percentage of Teachers with Degree Beyond Bachelor's: 43.2%

### Student Performance:

Percent Passing Grade 10 Florida Comprehensive Assessment Test



### Administrators-to Staff Ratios:

	Administrators to Classroom Teachers	Administrators to Total Staff
Florida	1 : 15.42	1 : 30.20
Citrus	1 : 12.09	1 : 26.20

### Florida Writing Assessment Scores (Scale: 0 - 6 )

	Grade 4	Grade 8	Grade 10
Florida	3.9	4.0	3.9
Citrus	3.9	3.9	4.0

### Dropout Rate:

Florida : 3.5%                      Citrus : 4.7%

### Per-Student Operating Costs (2004-05):

	Florida	Citrus
Expenditures per FTE	\$6,072	\$5,815

\*Education data is for 2005-06 unless otherwise indicated.