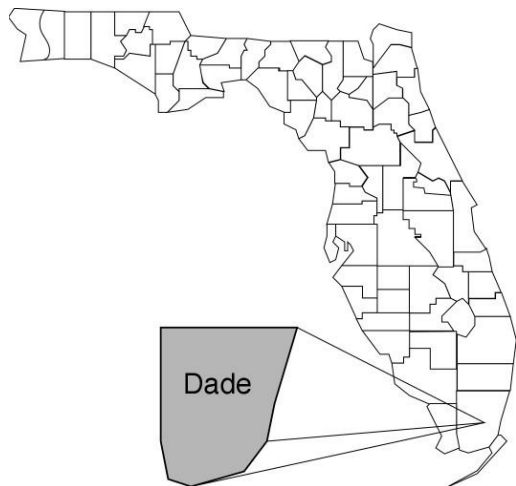


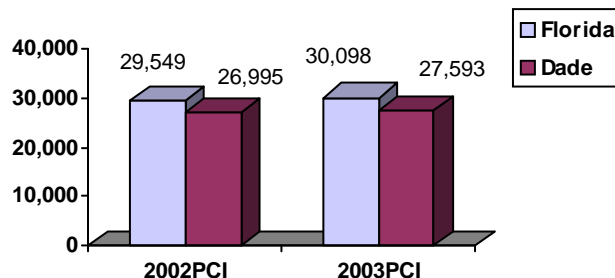
Dade (Miami-Dade) Community Data*



Population Density (per Sq. Mile):

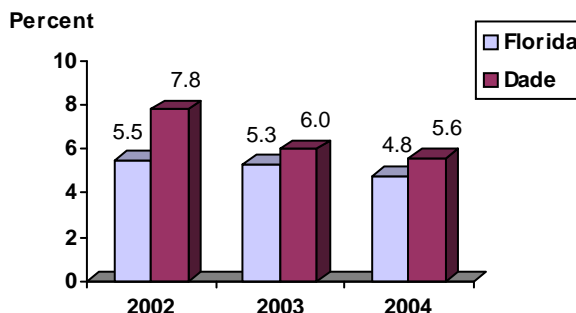
Florida 325
Dade 1,224 Rank in State: 4

Per Capita Income (\$):

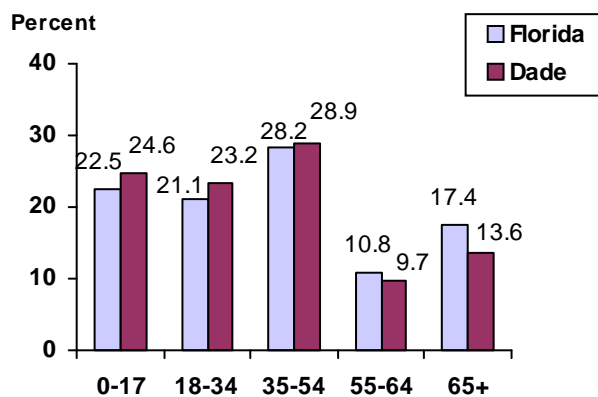


County Seat: Miami pop. 379,550
County Land Area (Sq. Miles): 1,946.1
County Water Area (Sq. Miles): 485.2
Population (2004): 2,379,818
 Projected (2010): 2,576,427

Unemployment Rate:



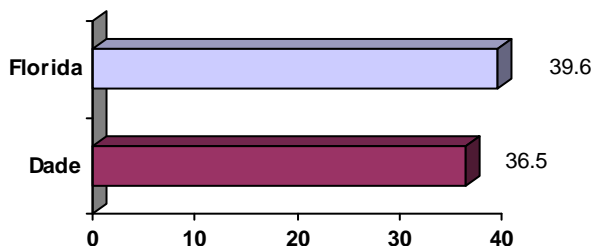
Population by Age Range:



Crime Rate:

	Rate per 100,000 Pop.	Percent Change 2003 to 2004
Florida	4,855.3	-6.0
Dade	6,742.3	-6.4

Median Age:



Births to Unwed Teenage Mothers:

	Number of Live Births	Births to Unwed Teen Mothers (number)	Births to Unwed Teen Mothers (percent)
Florida	218,045	20,449	9.4%
Dade	32,045	2,590	8.1%

*Unless otherwise indicated, community data shows Florida Statistical Abstract information for 2004.

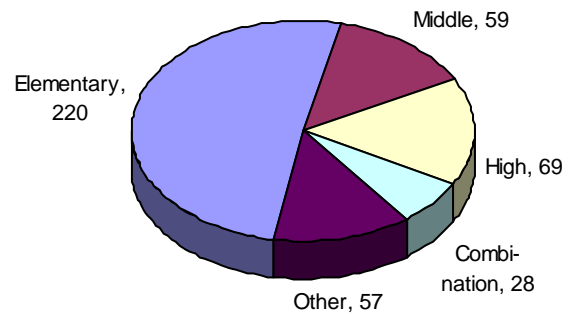
Dade (Miami-Dade)

Education Data*

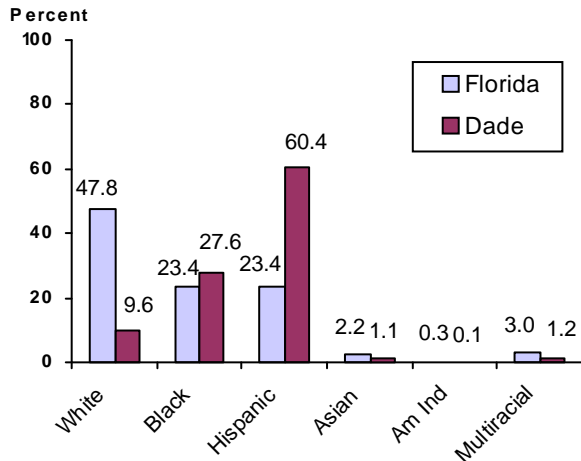
PK-12 Public School Membership: 362,033

Rank: 1

Number and Type of Public Schools:



PK-12 Membership by Race:

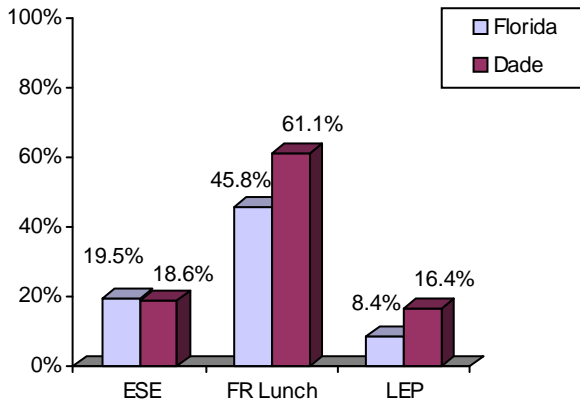


Average Teacher Salary by Degree Level:

	Bachelor's	Master's	Specialist	Doctorate
Florida	\$39,492	\$47,006	\$55,238	\$53,142
Dade	\$42,057	\$51,245	\$59,507	\$60,640
All degrees:	Florida = \$42,702	Dade = \$47,471		

Special Needs Populations:

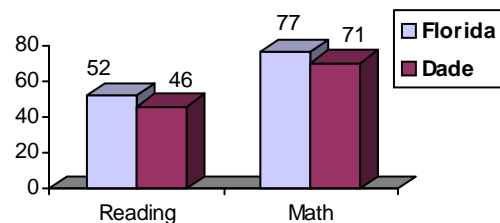
Free/Reduced-Price Lunch, ESE, and LEP Membership as a percentage of Total Membership



Percentage of Teachers with Degree Beyond Bachelor's: 48.3%

Student Performance:

Percent Passing Grade 10 Florida Comprehensive Assessment Test



Florida Writing Assessment Scores (Scale: 0 - 6)

	Grade 4	Grade 8	Grade 10
Florida	3.9	4.0	3.9
Dade	3.9	3.9	3.8

Administrators-to Staff Ratios:

	Administrators to Classroom Teachers	Administrators to Total Staff
Florida	1 : 15.42	1 : 30.20
Dade	1 : 16.58	1 : 30.60

Dropout Rate:

Florida : 3.5% Dade : 6.7%

Per-Student Operating Costs (2004-05):

	Florida	Dade
Expenditures per FTE	\$6,072	\$6,639

*Education data is for 2005-06 unless otherwise indicated.