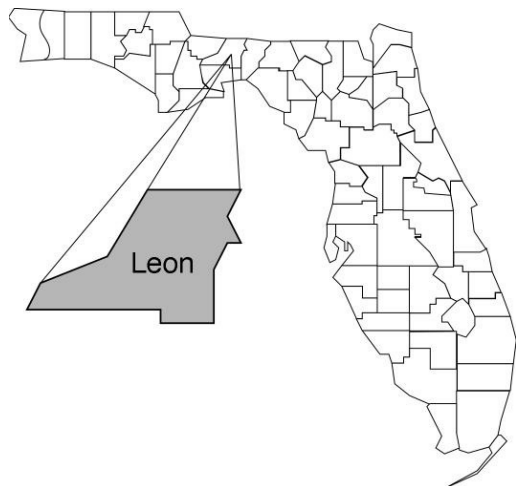


Leon

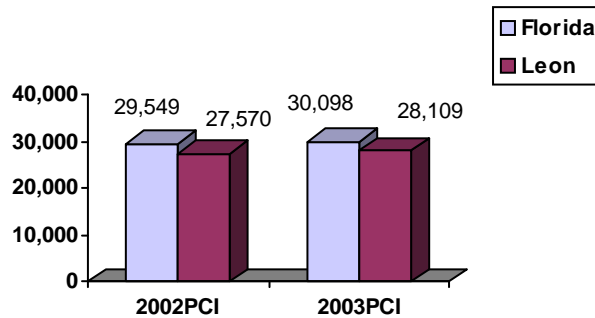
Community Data*



Population Density (per Sq. Mile):

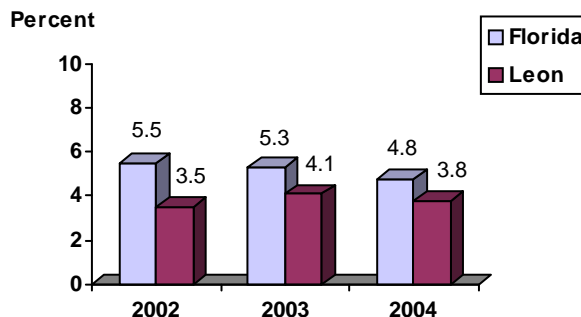
Florida	325		
Leon	396	Rank in State:	16

Per Capita Income (\$):

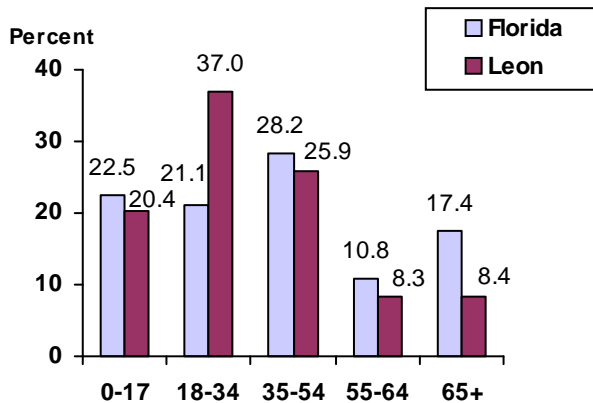


County Seat: Tallahassee	pop.	169,136
County Land Area (Sq. Miles):		666.7
County Water Area (Sq. Miles):		35.0
Population (2004):		263,896
Projected (2010):		288,424

Unemployment Rate:



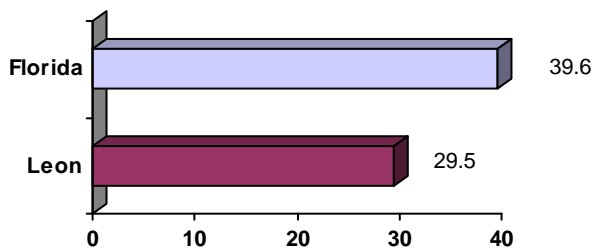
Population by Age Range:



Crime Rate:

	Rate per 100,000 Pop.	Percent Change 2003 to 2004
Florida	4,855.3	-6.0
Leon	4,868.6	-13.2

Median Age:



Births to Unwed Teenage Mothers:

	Number of Live Births	Births to Unwed Teen Mothers (number)	Births to Unwed Teen Mothers (percent)
Florida	218,045	20,449	9.4%
Leon	3,126	233	7.5%

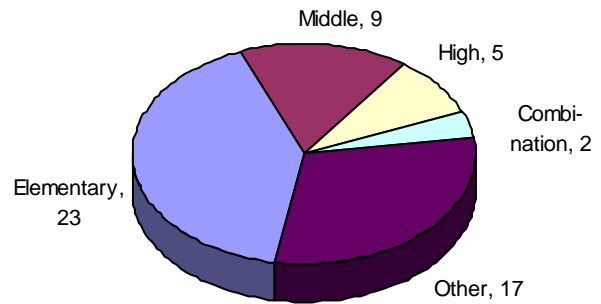
*Unless otherwise indicated, community data shows Florida Statistical Abstract information for 2004.

Leon

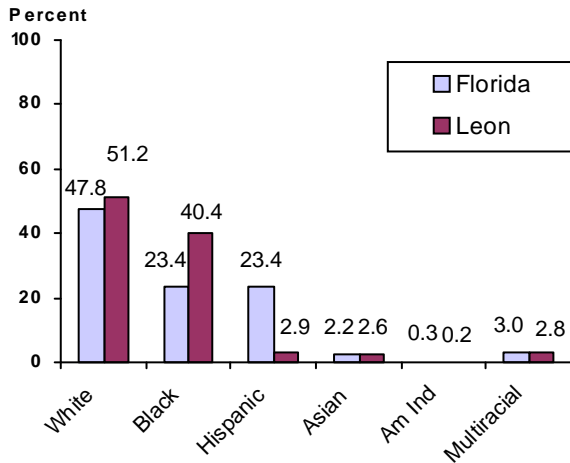
Education Data*

PK-12 Public School Membership: 32,316
Rank: 23

Number and Type of Public Schools:



PK-12 Membership by Race:

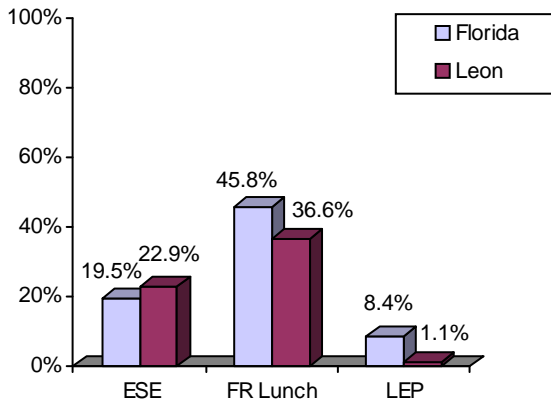


Average Teacher Salary by Degree Level:

	Bachelor's	Master's	Specialist	Doctorate
Florida	\$39,492	\$47,006	\$55,238	\$53,142
Leon	\$37,994	\$44,599	\$49,038	\$52,178
All degrees:	Florida = \$42,702	Leon = \$41,269		

Special Needs Populations:

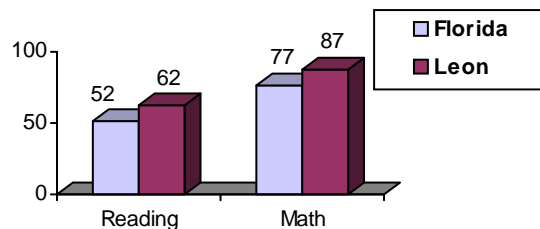
Free/Reduced-Price Lunch, ESE, and LEP Membership as a percentage of Total Membership



Percentage of Teachers with Degree Beyond Bachelor's: 46.0%

Student Performance:

Percent Passing Grade 10 Florida Comprehensive Assessment Test



Florida Writing Assessment Scores (Scale: 0 - 6)

	Grade 4	Grade 8	Grade 10
Florida	3.9	4.0	3.9
Leon	3.9	4.2	4.1

Administrators-to Staff Ratios:

	Administrators to Classroom Teachers	Administrators to Total Staff
Florida	1 : 15.42	1 : 30.20
Leon	1 : 12.58	1 : 27.06

Dropout Rate:

Florida : 3.5% Leon : 2.3%

Per-Student Operating Costs (2004-05):

	Florida	Leon
Expenditures per FTE	\$6,072	\$6,155