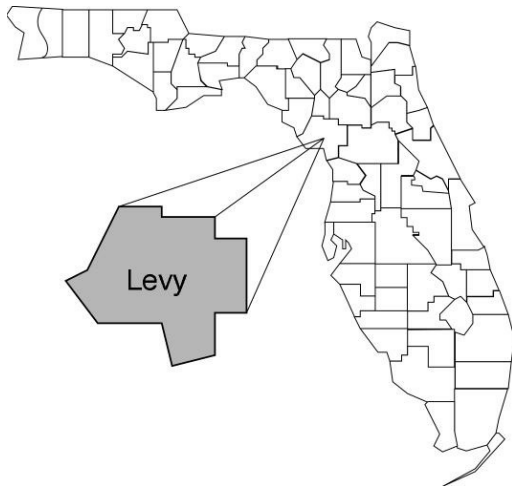
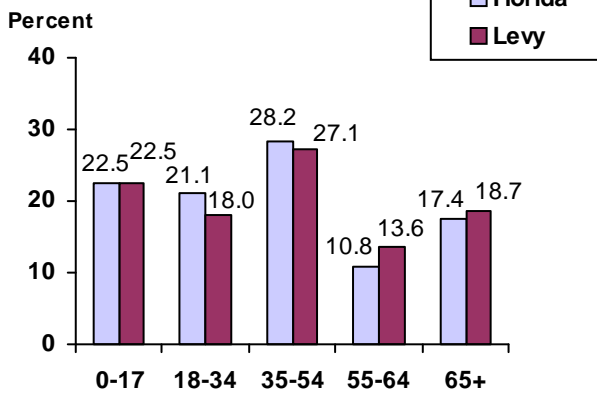


Levy Community Data*

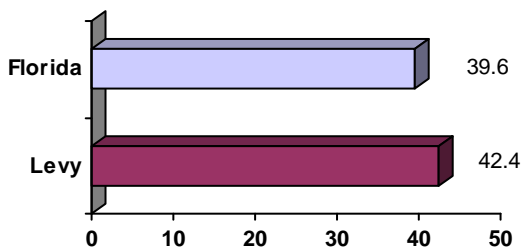


County Seat: Bronson pop. 987
County Land Area (Sq. Miles): 1,118.4
County Water Area (Sq. Miles): 293.9
Population (2004): 37,486
 Projected (2010): 42,476

Population by Age Range:



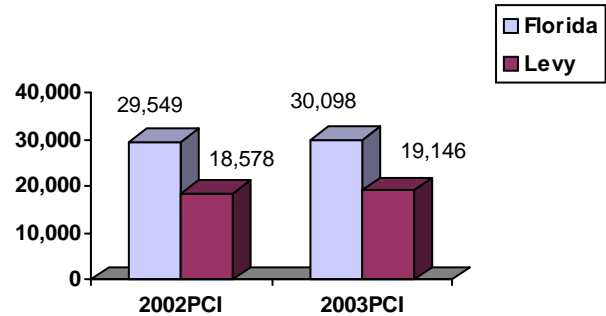
Median Age:



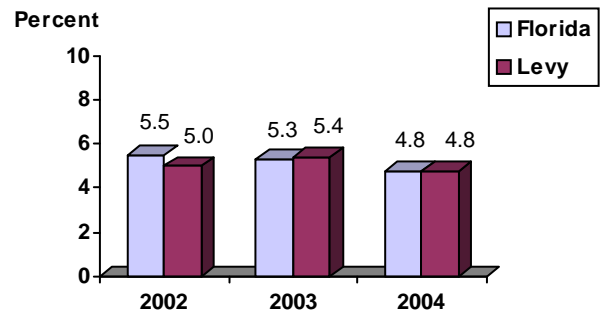
Population Density (per Sq. Mile):

Florida 325
 Levy 34 Rank in State: 55

Per Capita Income (\$):



Unemployment Rate:



Crime Rate:

	Rate per 100,000 Pop.	Percent Change 2003 to 2004
Florida	4,855.3	-6.0
Levy	3,937.5	-6.8

Births to Unwed Teenage Mothers:

	Number of Live Births	Births to Unwed Teen Mothers (number)	Births to Unwed Teen Mothers (percent)
Florida	218,045	20,449	9.4%
Levy	438	50	11.4%

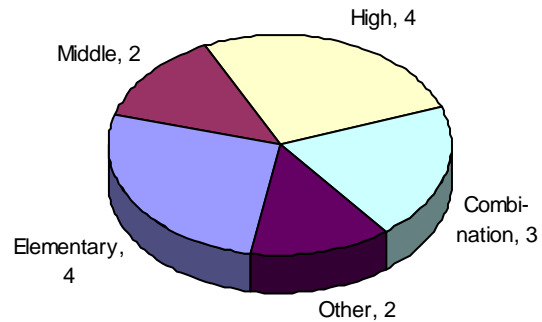
*Unless otherwise indicated, community data shows Florida Statistical Abstract information for 2004.

Levy

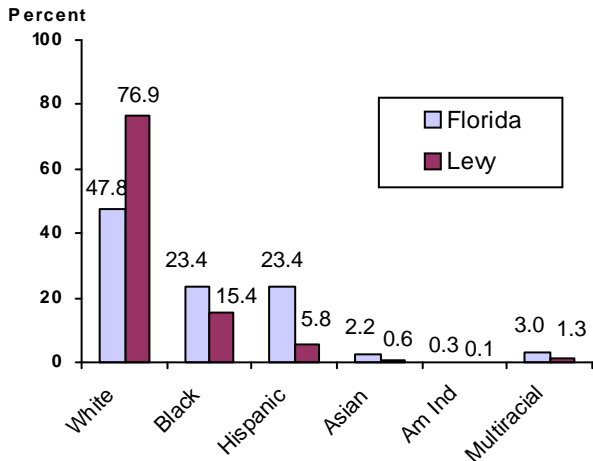
Education Data*

PK-12 Public School Membership: 6,251
Rank: 46

Number and Type of Public Schools:



PK-12 Membership by Race:

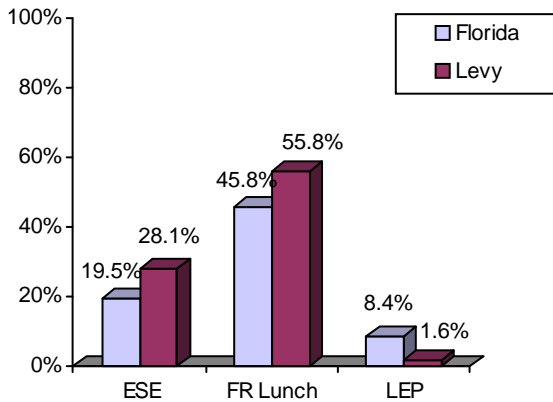


Average Teacher Salary by Degree Level:

	Bachelor's	Master's	Specialist	Doctorate
Florida	\$39,492	\$47,006	\$55,238	\$53,142
Levy	\$38,635	\$42,758	\$43,375	\$38,702
All degrees:	Florida = \$42,702	Levy = \$40,011		

Special Needs Populations:

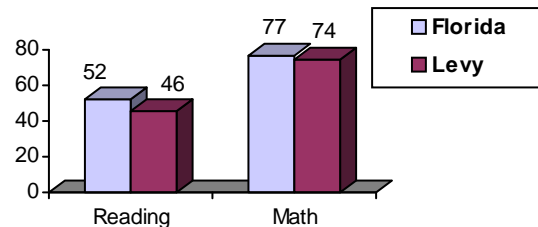
Free/Reduced-Price Lunch, ESE, and LEP Membership as a percentage of Total Membership



Percentage of Teachers with Degree Beyond Bachelor's: 33.6%

Student Performance:

Percent Passing Grade 10 Florida Comprehensive Assessment Test



Administrators-to Staff Ratios:

	Administrators to Classroom Teachers	Administrators to Total Staff
Florida	1 : 15.42	1 : 30.20
Levy	1 : 9.56	1 : 22.09

Florida Writing Assessment Scores (Scale: 0 - 6)

	Grade 4	Grade 8	Grade 10
Florida	3.9	4.0	3.9
Levy	3.5	3.9	3.7

Dropout Rate:

Florida : 3.5% Levy : 4.8%

Per-Student Operating Costs (2004-05):

	Florida	Levy
Expenditures per FTE	\$6,072	\$5,871