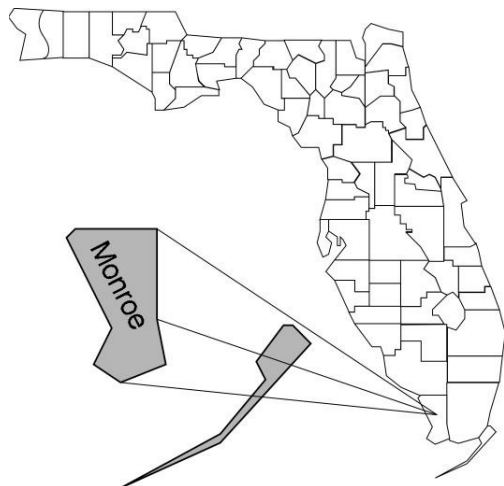


# Monroe

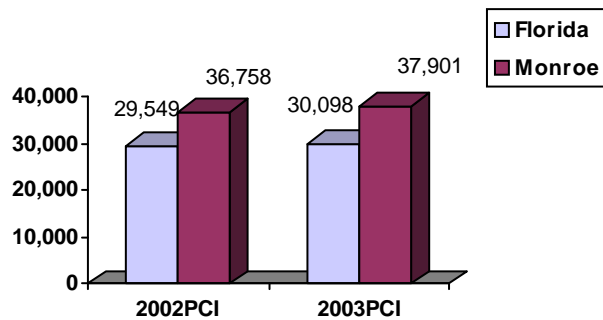
## Community Data\*



### Population Density (per Sq. Mile):

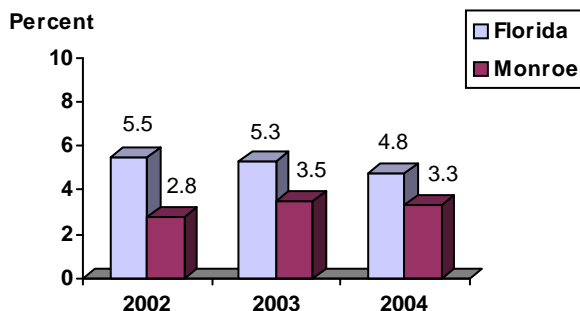
Florida	325		
Monroe	81	Rank in State:	41

### Per Capita Income (\$):

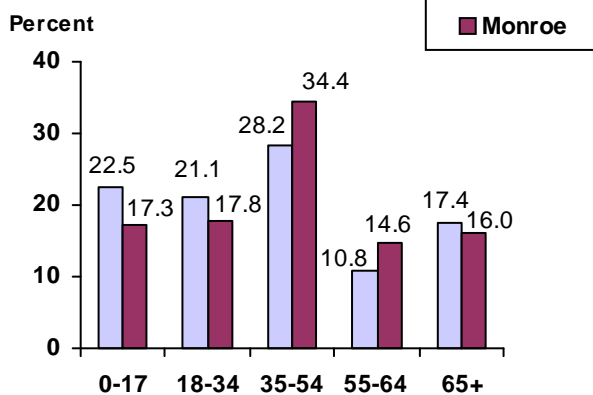


<b>County Seat:</b> Key West	pop.	26,215
<b>County Land Area (Sq. Miles):</b>		996.9
<b>County Water Area (Sq. Miles):</b>		2,740.2
<b>Population (2004):</b>		81,236
Projected (2010):		82,414

### Unemployment Rate:



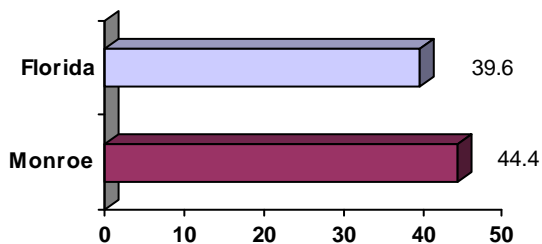
### Population by Age Range:



### Crime Rate:

	Rate per 100,000 Pop.	Percent Change 2003 to 2004
Florida	4,855.3	-6.0
Monroe	5,665.0	-1.6

### Median Age:



### Births to Unwed Teenage Mothers:

	Number of Live Births	Births to Unwed Teen Mothers (number)	Births to Unwed Teen Mothers (percent)
Florida	218,045	20,449	9.4%
Monroe	738	38	5.1%

\*Unless otherwise indicated, community data shows Florida Statistical Abstract information for 2004.

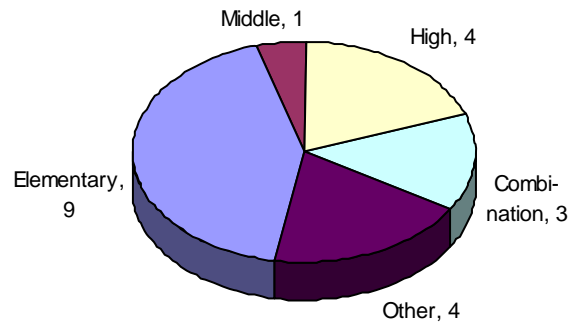
# Monroe

## Education Data\*

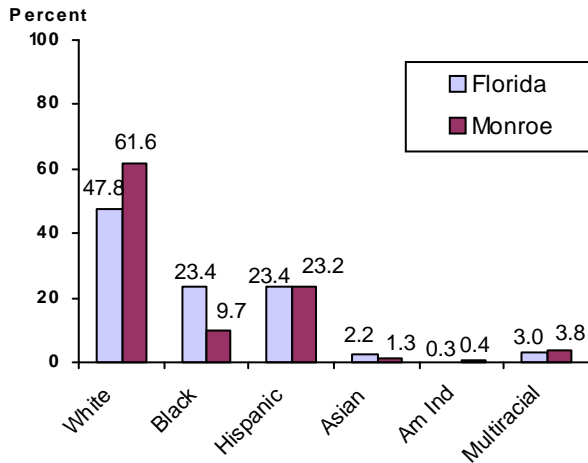
**PK-12 Public School Membership:** 8,587

Rank: 39

### Number and Type of Public Schools:



### PK-12 Membership by Race:

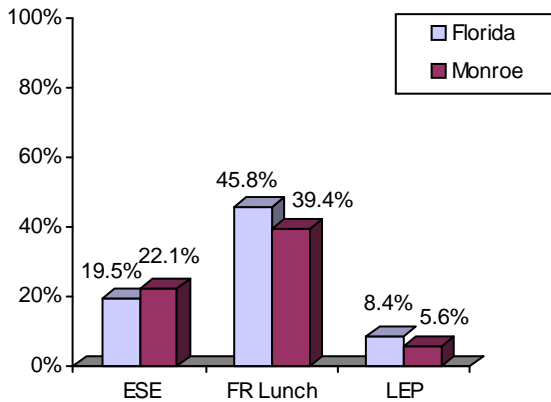


### Average Teacher Salary by Degree Level:

	Bachelor's	Master's	Specialist	Doctorate
Florida	\$39,492	\$47,006	\$55,238	\$53,142
Monroe	\$45,613	\$52,497	\$52,237	\$47,863
All degrees:	Florida = \$42,702	Monroe = \$48,422		

### Special Needs Populations:

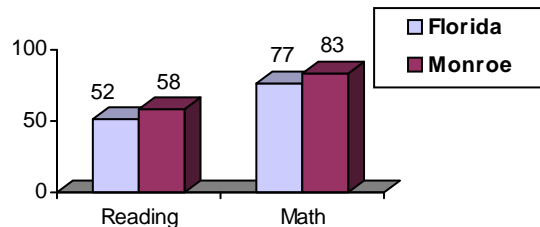
Free/Reduced-Price Lunch, ESE, and LEP Membership as a percentage of Total Membership



### Percentage of Teachers with Degree Beyond Bachelor's: 41.9%

### Student Performance:

Percent Passing Grade 10 Florida Comprehensive Assessment Test



### Florida Writing Assessment Scores (Scale: 0 - 6)

	Grade 4	Grade 8	Grade 10
Florida	3.9	4.0	3.9
Monroe	3.8	4.0	3.8

### Administrators-to Staff Ratios:

	Administrators to Classroom Teachers	Administrators to Total Staff
Florida	1 : 15.42	1 : 30.20
Monroe	1 : 9.91	1 : 21.81

### Dropout Rate:

Florida : 3.5%      Monroe : 1.5%

### Per-Student Operating Costs (2004-05):

	Florida	Monroe
Expenditures per FTE	\$6,072	\$8,090

\*Education data is for 2005-06 unless otherwise indicated.