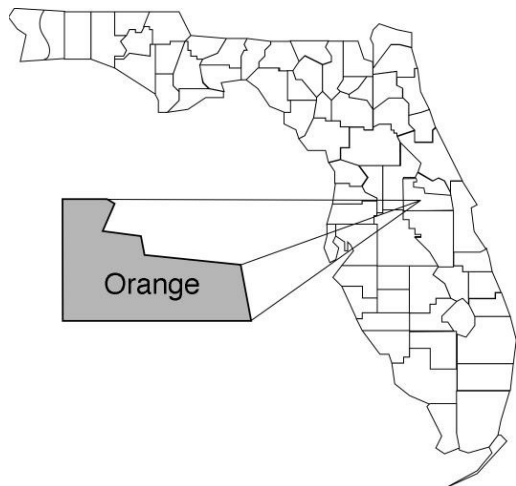


# Orange

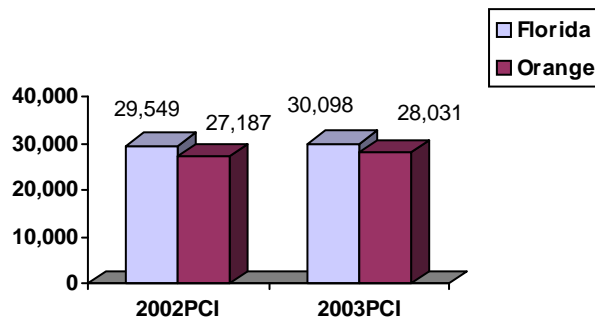
## Community Data\*



### Population Density (per Sq. Mile):

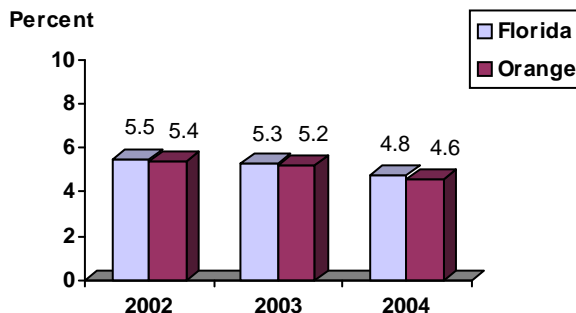
Florida	325		
Orange	1,117	Rank in State:	5

### Per Capita Income (\$):

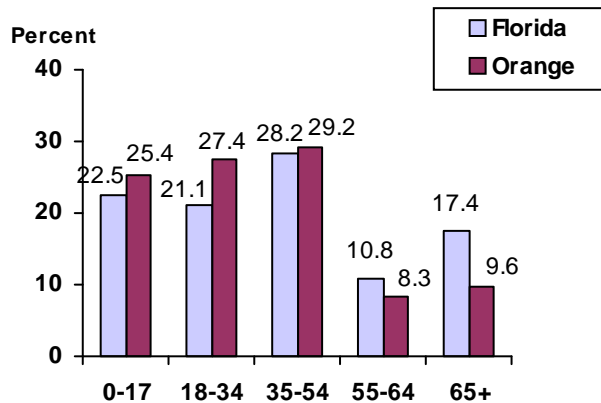


<b>County Seat:</b>	Orlando	pop.	208,900
<b>County Land Area (Sq. Miles):</b>			907.5
<b>County Water Area (Sq. Miles):</b>			96.7
<b>Population (2004):</b>			1,013,937
Projected (2010):			1,183,386

### Unemployment Rate:



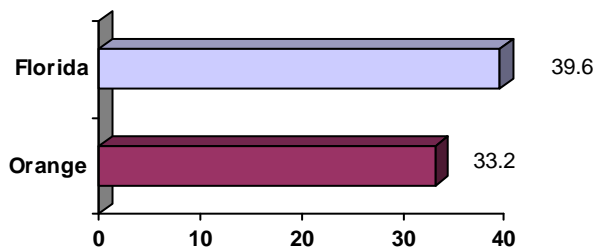
### Population by Age Range:



### Crime Rate:

	Rate per 100,000 Pop.	Percent Change 2003 to 2004
Florida	4,855.3	-6.0
Orange	6,045.1	-5.3

### Median Age:



### Births to Unwed Teenage Mothers:

	Number of Live Births	Births to Unwed Teen Mothers (number)	Births to Unwed Teen Mothers (percent)
Florida	218,045	20,449	9.4%
Orange	15,327	1,400	9.1%

\*Unless otherwise indicated, community data shows Florida Statistical Abstract information for 2004.

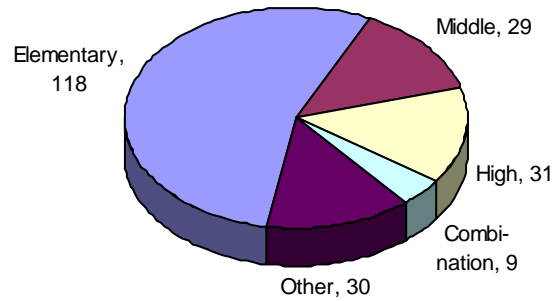
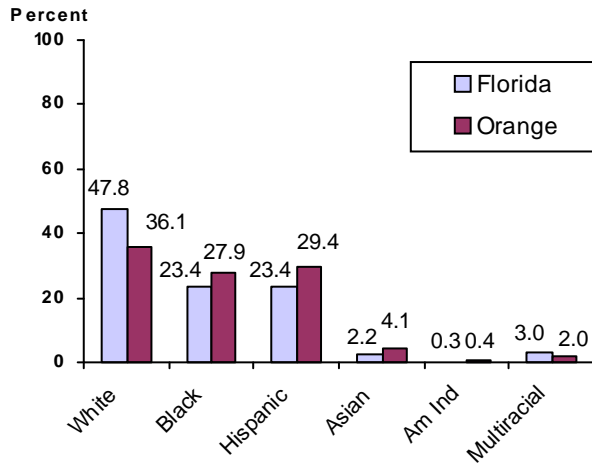
# Orange

## Education Data\*

**PK-12 Public School Membership:** 175,307  
**Rank:** 4

### Number and Type of Public Schools:

### PK-12 Membership by Race:

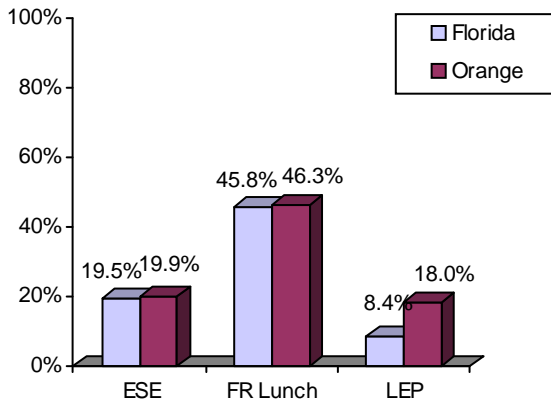


### Average Teacher Salary by Degree Level:

	Bachelor's	Master's	Specialist	Doctorate
Florida	\$39,492	\$47,006	\$55,238	\$53,142
Orange	\$38,924	\$45,199	\$48,547	\$48,881
All degrees:	Florida = \$42,702	Orange = \$41,246		

### Special Needs Populations:

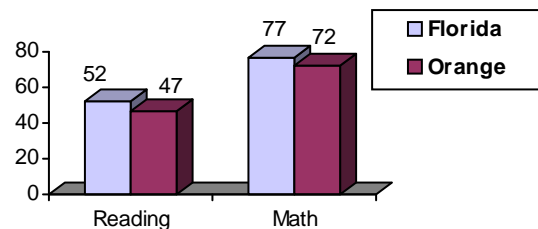
Free/Reduced-Price Lunch, ESE, and LEP Membership as a percentage of Total Membership



### Percentage of Teachers with Degree Beyond Bachelor's: 35.9%

### Student Performance:

Percent Passing Grade 10 Florida Comprehensive Assessment Test



### Administrators-to Staff Ratios:

	Administrators to Classroom Teachers	Administrators to Total Staff
Florida	1 : 15.42	1 : 30.20
Orange	1 : 18.30	1 : 36.96

### Florida Writing Assessment Scores (Scale: 0 - 6)

	Grade 4	Grade 8	Grade 10
Florida	3.9	4.0	3.9
Orange	3.7	3.8	3.8

### Dropout Rate:

Florida : 3.5%      Orange : 1.9%

### Per-Student Operating Costs (2004-05):

	Florida	Orange
Expenditures per FTE	\$6,072	\$5,783