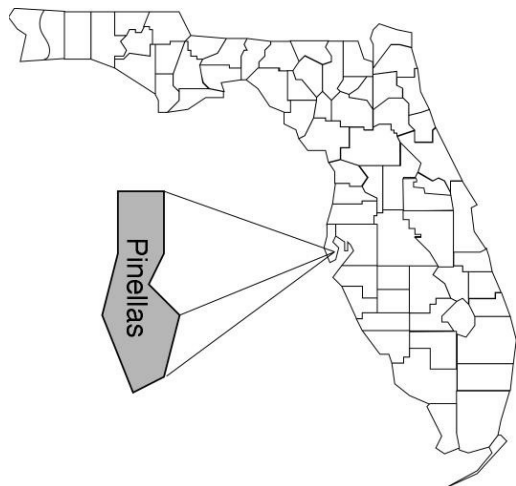


Pinellas

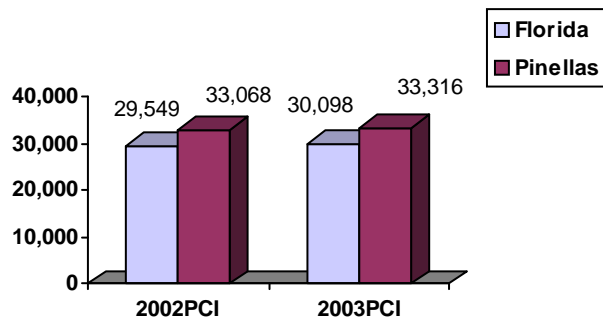
Community Data*



Population Density (per Sq. Mile):

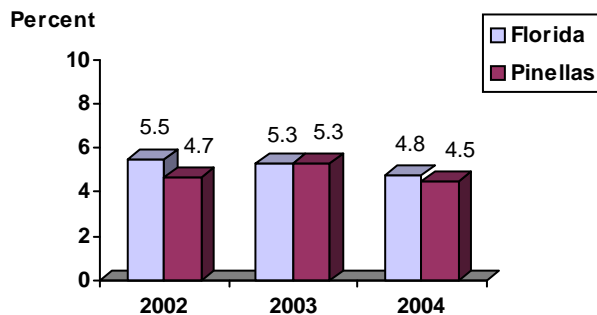
Florida	325		
Pinellas	3,368	Rank in State:	1

Per Capita Income (\$):

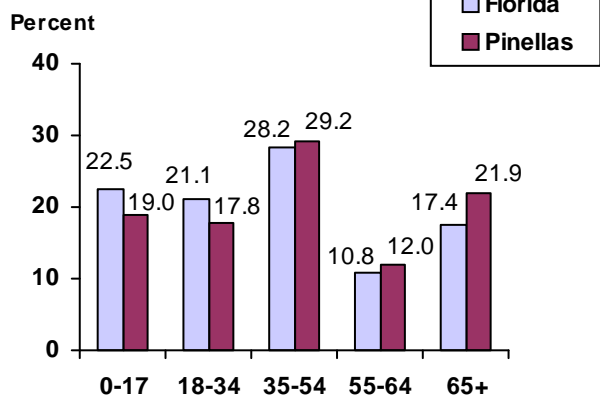


County Seat: Clearwater	pop.	110,325
County Land Area (Sq. Miles):		279.9
County Water Area (Sq. Miles):		327.8
Population (2004):		943,640
Projected (2010):		980,346

Unemployment Rate:



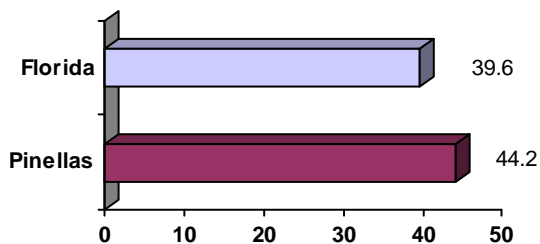
Population by Age Range:



Crime Rate:

	Rate per 100,000 Pop.	Percent Change 2003 to 2004
Florida	4,855.3	-6.0
Pinellas	5,262.5	-0.7

Median Age:



Births to Unwed Teenage Mothers:

	Number of Live Births	Births to Unwed Teen Mothers (number)	Births to Unwed Teen Mothers (percent)
Florida	218,045	20,449	9.4%
Pinellas	9,043	891	9.9%

*Unless otherwise indicated, community data shows Florida Statistical Abstract information for 2004.

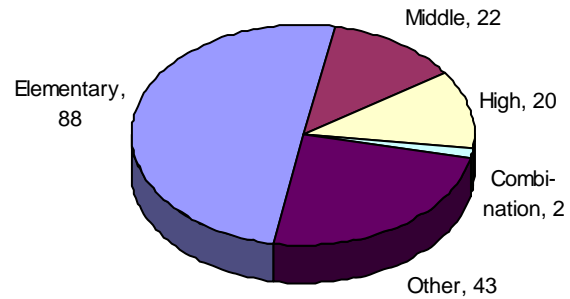
Pinellas

Education Data*

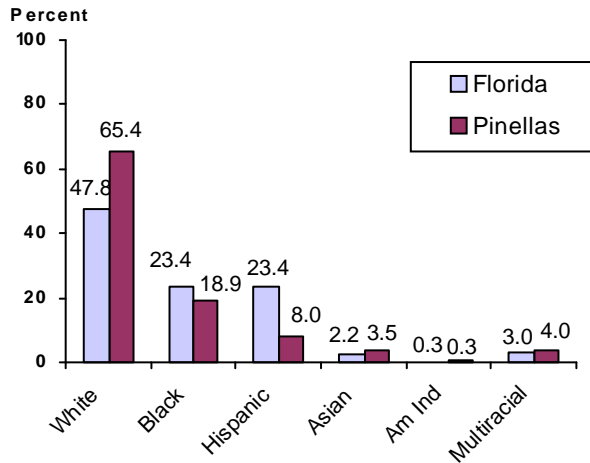
PK-12 Public School Membership: 112,127

Rank: 7

Number and Type of Public Schools:



PK-12 Membership by Race:

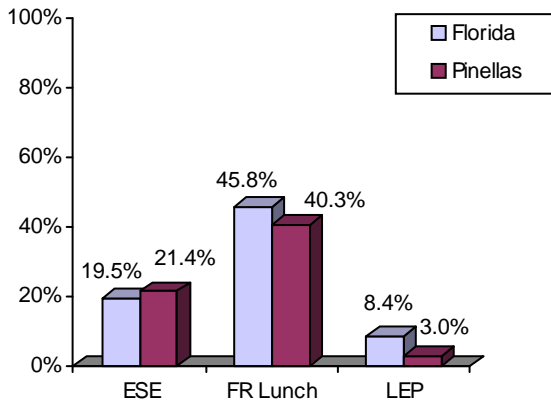


Average Teacher Salary by Degree Level:

	Bachelor's	Master's	Specialist	Doctorate
Florida	\$39,492	\$47,006	\$55,238	\$53,142
Pinellas	\$41,716	\$47,097	\$52,051	\$51,815
All degrees:	Florida = \$42,702	Pinellas = \$43,916		

Special Needs Populations:

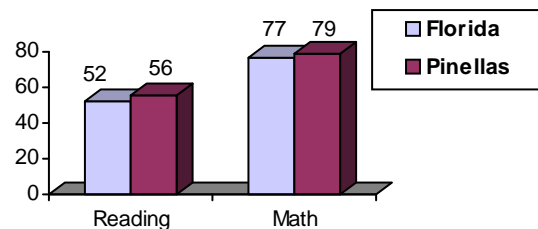
Free/Reduced-Price Lunch, ESE, and LEP Membership as a percentage of Total Membership



Percentage of Teachers with Degree Beyond Bachelor's: 38.8%

Student Performance:

Percent Passing Grade 10 Florida Comprehensive Assessment Test



Florida Writing Assessment Scores (Scale: 0 - 6)

	Grade 4	Grade 8	Grade 10
Florida	3.9	4.0	3.9
Pinellas	3.8	4.0	4.0

Administrators-to Staff Ratios:

	Administrators to Classroom Teachers	Administrators to Total Staff
Florida	1 : 15.42	1 : 30.20
Pinellas	1 : 14.25	1 : 28.99

Dropout Rate:

Florida : 3.5% Pinellas : 3.0%

Per-Student Operating Costs (2004-05):

	Florida	Pinellas
Expenditures per FTE	\$6,072	\$6,204