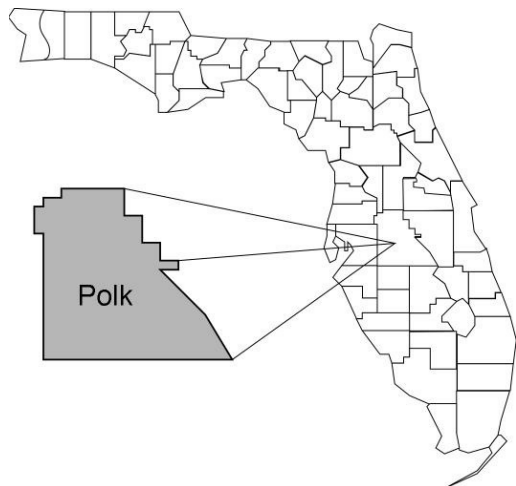


# Polk

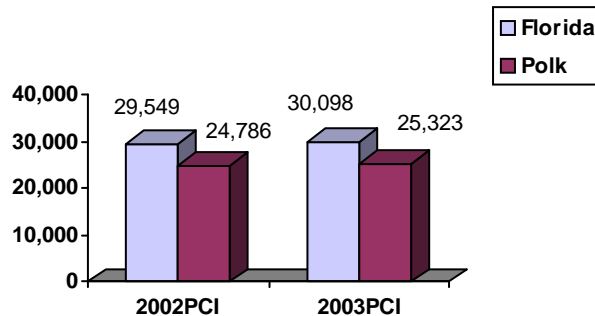
## Community Data\*



### Population Density (per Sq. Mile):

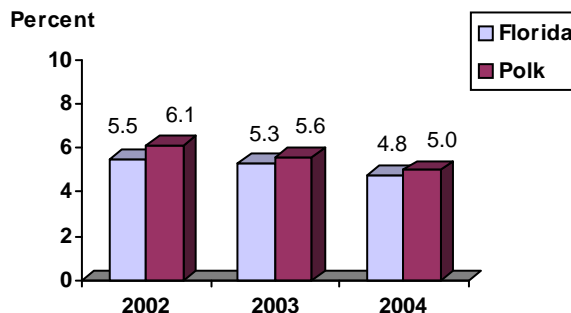
Florida	325		
Polk	282	Rank in State:	19

### Per Capita Income (\$):

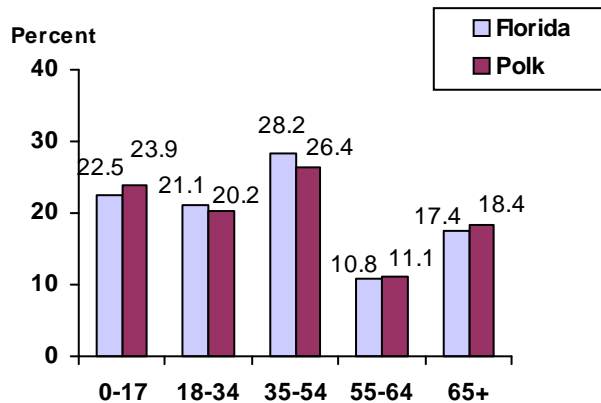


<b>County Seat:</b>	Bartow	pop.	15,709
<b>County Land Area (Sq. Miles):</b>	1,874.4		
<b>County Water Area (Sq. Miles):</b>	135.6		
<b>Population (2004):</b>	528,389		
Projected (2010):	587,621		

### Unemployment Rate:



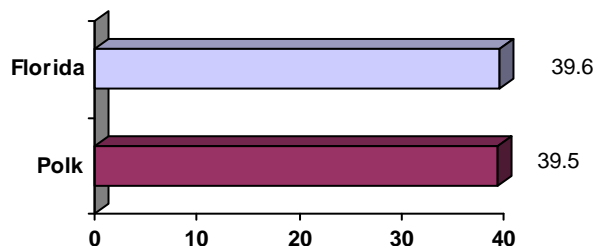
### Population by Age Range:



### Crime Rate:

	Rate per 100,000 Pop.	Percent Change 2003 to 2004
Florida	4,855.3	-6.0
Polk	4,457.9	-10.9

### Median Age:



### Births to Unwed Teenage Mothers:

	Number of Live Births	Births to Unwed Teen Mothers (number)	Births to Unwed Teen Mothers (percent)
Florida	218,045	20,449	9.4%
Polk	7,245	942	13.0%

\*Unless otherwise indicated, community data shows Florida Statistical Abstract information for 2004.

# Polk

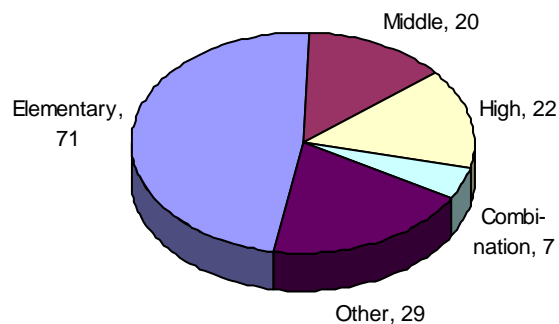
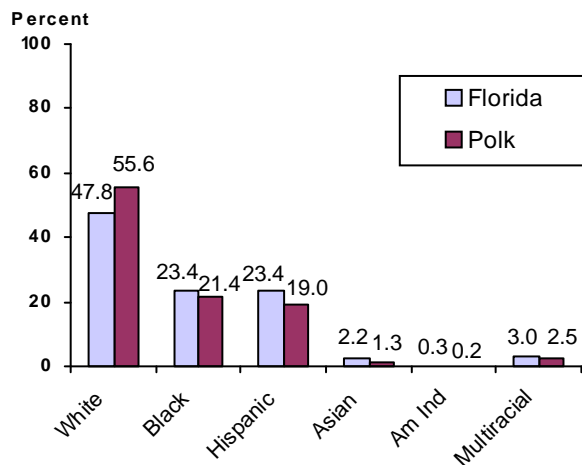
## Education Data\*

**PK-12 Public School Membership:** 89,483

Rank: 8

### Number and Type of Public Schools:

### PK-12 Membership by Race:

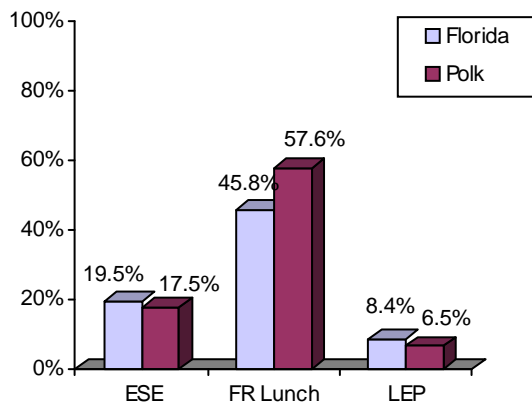


### Average Teacher Salary by Degree Level:

	Bachelor's	Master's	Specialist	Doctorate
Florida	\$39,492	\$47,006	\$55,238	\$53,142
Polk	\$37,875	\$45,773	\$51,473	\$44,748
All degrees:	Florida = \$42,702	Polk = \$39,875		

### Special Needs Populations:

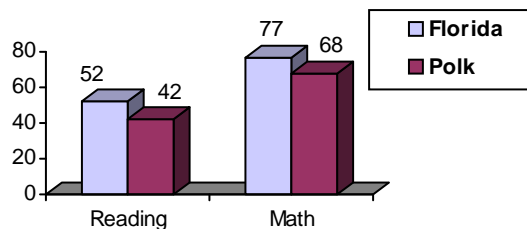
Free/Reduced-Price Lunch, ESE, and LEP Membership as a percentage of Total Membership



### Percentage of Teachers with Degree Beyond Bachelor's: 24.7%

### Student Performance:

Percent Passing Grade 10 Florida Comprehensive Assessment Test



### Florida Writing Assessment Scores (Scale: 0 - 6)

	Grade 4	Grade 8	Grade 10
Florida	3.9	4.0	3.9
Polk	3.9	3.9	3.7

### Administrators-to Staff Ratios:

	Administrators to Classroom Teachers	Administrators to Total Staff
Florida	1 : 15.42	1 : 30.20
Polk	1 : 15.83	1 : 31.50

### Dropout Rate:

Florida : 3.5%                      Polk : 4.4%

### Per-Student Operating Costs (2004-05):

	Florida	Polk
Expenditures per FTE	\$6,072	\$6,229