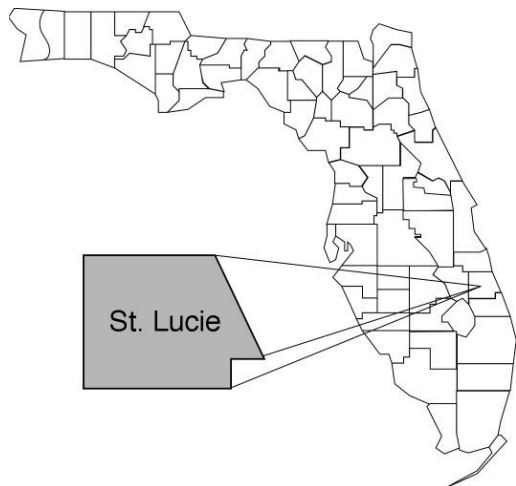


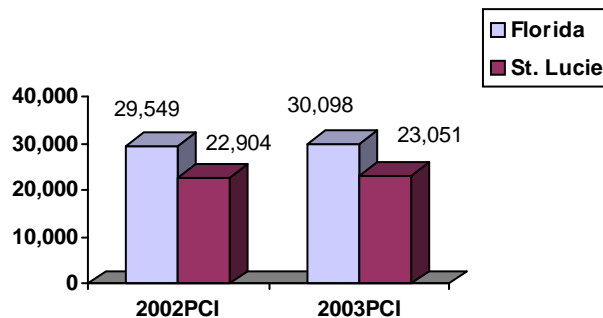
# St. Lucie Community Data\*



## Population Density (per Sq. Mile):

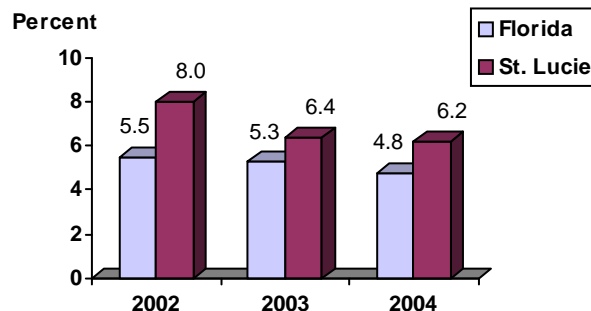
Florida	325	
St. Lucie	395	Rank in State: 17

## Per Capita Income (\$):

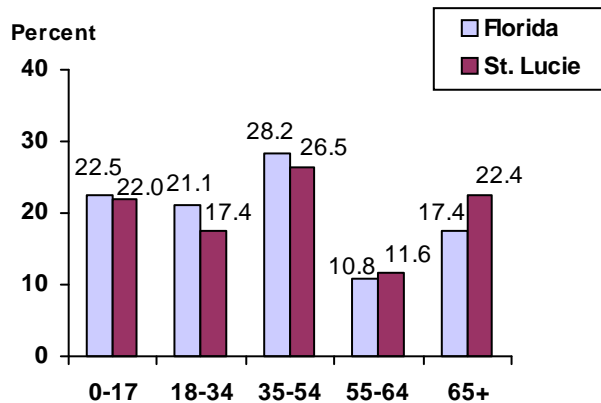


<b>County Seat:</b> Ft. Pierce	pop.	39,044
<b>County Land Area (Sq. Miles):</b>		572.5
<b>County Water Area (Sq. Miles):</b>		115.6
<b>Population (2004):</b>		226,216
Projected (2010):		264,510

## Unemployment Rate:



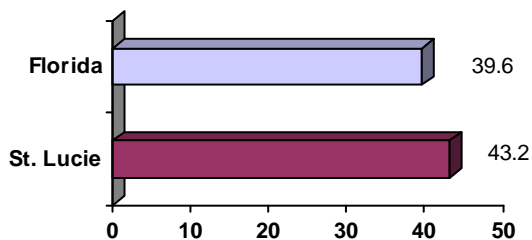
## Population by Age Range:



## Crime Rate:

	Rate per 100,000 Pop.	Percent Change 2003 to 2004
Florida	4,855.3	-6.0
St. Lucie	4,035.5	-13.3

## Median Age:



## Births to Unwed Teenage Mothers:

	Number of Live Births	Births to Unwed Teen Mothers (number)	Births to Unwed Teen Mothers (percent)
Florida	218,045	20,449	9.4%
St. Lucie	2,864	330	11.5%

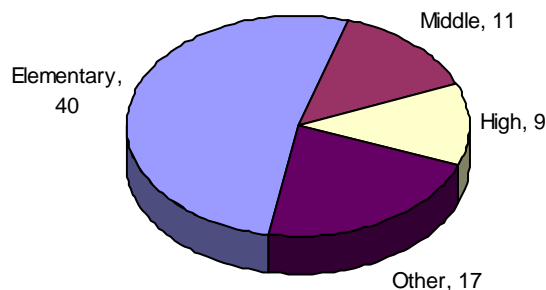
\*Unless otherwise indicated, community data shows Florida Statistical Abstract information for 2004.

# St. Lucie

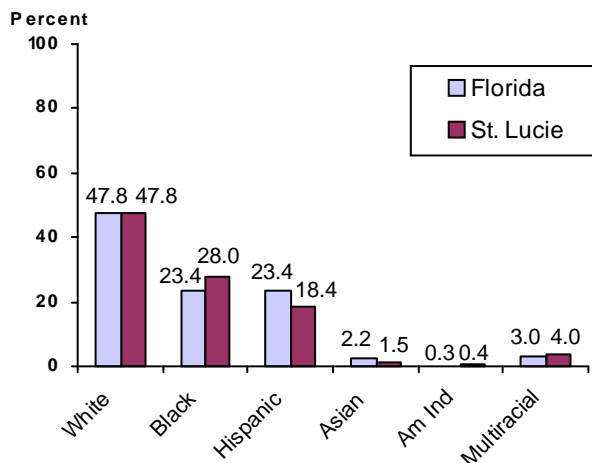
## Education Data\*

**PK-12 Public School Membership:** 36,184  
**Rank:** 21

### Number and Type of Public Schools:



### PK-12 Membership by Race:

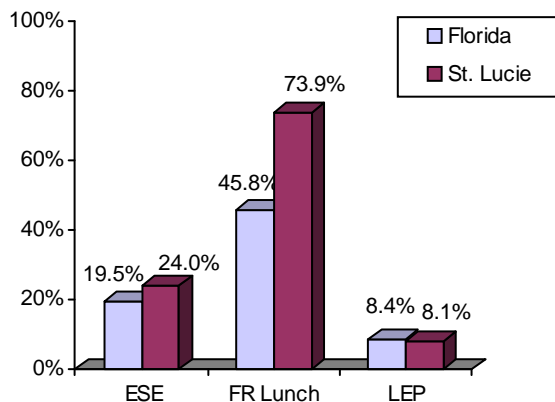


### Average Teacher Salary by Degree Level:

	Bachelor's	Master's	Specialist	Doctorate
Florida	\$39,492	\$47,006	\$55,238	\$53,142
St. Lucie	\$39,111	\$46,866	\$53,847	\$51,678
All degrees:	Florida = \$42,702	St. Lucie = \$42,097		

### Special Needs Populations:

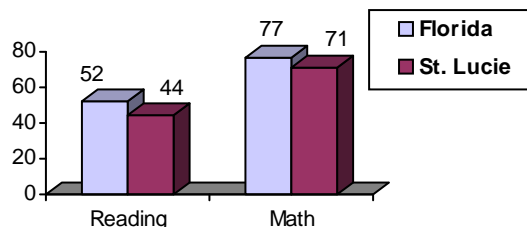
Free/Reduced-Price Lunch, ESE, and LEP Membership as a percentage of Total Membership



### Percentage of Teachers with Degree Beyond Bachelor's: 36.2%

### Student Performance:

Percent Passing Grade 10 Florida Comprehensive Assessment Test



### Florida Writing Assessment Scores (Scale: 0 - 6)

	Grade 4	Grade 8	Grade 10
Florida	3.9	4.0	3.9
St. Lucie	3.7	3.9	3.7

### Administrators-to Staff Ratios:

	Administrators to Classroom Teachers	Administrators to Total Staff
Florida	1 : 15.42	1 : 30.20
St. Lucie	1 : 15.90	1 : 34.13

### Dropout Rate:

Florida : 3.5%      St. Lucie : 2.2%

### Per-Student Operating Costs (2004-05):

	Florida	St. Lucie
Expenditures per FTE	\$6,072	\$5,686