



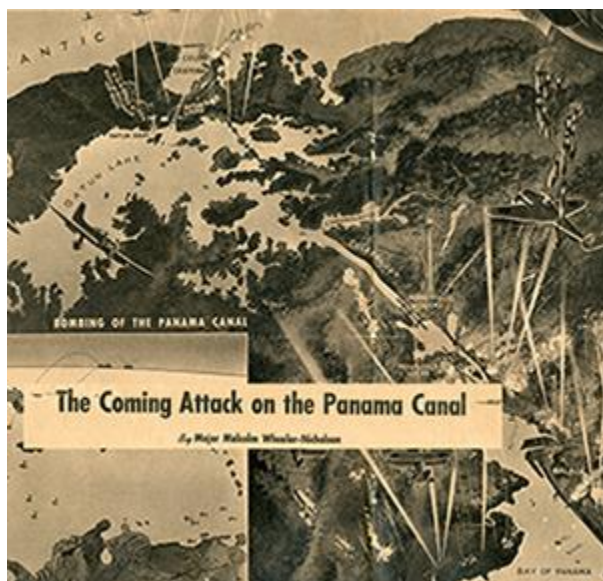
CANAL GATOR TALES

January 2020

2020 Spring Luncheon and Exhibition

The annual Spring luncheon and joint meeting of the Friends of the Panama Canal Museum Collection and the Panama Canal Society will be held Saturday, March 7, 2020, in the Smathers Library Building on the University of Florida campus. If you are interested in attending the luncheon, please refer to the [registration form](#) for PCS members.

Luncheon attendees will be able to view the new exhibition in the Albert Nahmad Panama Canal Gallery, *Are We Next? Fear and Social Roles in World War II*, which examines the defense of the Panama Canal during World War II. After the attack on Pearl Harbor in 1941, there was heightened fear that the Canal would be the next target because of its importance to the war effort for U.S. and the Allies. The military, government officials, and civilians worked together to ensure that the Canal would not be vulnerable to sabotage or bombing and that Canal operations continued uninterrupted. This exhibition explores the personal experiences, social aspects, and politics of defending and operating the Canal during the war.



The exhibition will be available in the Gallery until February 2021, and visitors are welcome to view the exhibition during weekdays and on Sundays when the Smathers Library Building is open on the UF campus. The exhibition, which coincides with the 75th anniversary of the end of the war in 1945, was developed with curatorial assistance from graduate students in the Museum Studies program at UF.

Silent Auction at the PCS Annual Reunion

The Friends of the PCMC will hold a silent auction at the Panama Canal Society Reunion to be held in Orlando on June 24-28, 2020, in order to raise funds to support the collection, and we are looking for donors and volunteers to make this a success. Here is how you can help:

1. Please donate items for the auction. We accept everything from clothing and jewelry to art and decorative objects. If you are interested in donating items, please complete the [Silent Auction Donor Form](#) and send to Mickey Walker Fitzgerald at mickeyftz@aol.com or 1381 Scarlett Trail, New Smyrna Beach, FL 32168-9238. Please wait for Mickey's reply before sending your items.
2. Please consider volunteering your time to help at the auction with set-up and clean-up and everything in between. If you are interested in volunteering your time, please complete the [Volunteer Form](#) and send to Mickey Walker Fitzgerald at mickeyftz@aol.com or 1381 Scarlett Trail, New Smyrna Beach, FL 32168-9238.

Thank you for supporting the Silent Auction and the PCMC!

Exhibition Closing February 2020

An American Canal in Panama, our current exhibition in the Albert H. Nahmad Panama Canal Gallery, will close February 21, 2020. This exhibition looks at the relationship between the United States and the Republic of Panama, and examines events that led to the transfer of the Canal in 1999. For those of you unable to visit the UF campus to see the exhibition, we encourage you to visit our online exhibit <http://exhibits.uflib.ufl.edu/AmericanCanal>, and we also want to share with you some photos of the exhibition as it is displayed in the Smathers Library Building. The images below depict cases covering the 1960s through 1999.

In future issues of we will regularly share images of the Gallery so that everyone can see how the exhibition is displayed in the Gallery.



Time is Running Out to Sign Up for the Friends of the PCMC Caribbean Cruise!

Don't miss out on your chance to support the PCMC while cruising the Caribbean on the Norwegian *Encore*, one of the most innovative ships to be launched to date. Lori Snow's Condor Tours and Travel will generously donate a portion of the proceeds to the Friends of the PCMC, so you are directly supporting the collection when you sign up for this terrific trip.

The 7-day cruise of the Eastern Caribbean is scheduled for March 8-15, 2020, and departs from Miami. The trip is scheduled conveniently after the Spring luncheon at UF, which will take place on March 7, 2020. Ports include San Juan, Puerto Rico; St. Thomas in the US Virgin Islands; and Tortola in the British Virgin Islands. For the latest rate information, please contact Condor Tours and Travel at 770-339-9961. For more information about the cruise, refer to the cruise flyer: <http://www.uflib.ufl.edu/spec/pcm/cruise flyer2020.pdf>.

Important Dates

February 21, 2020

Closing of the exhibition *An American Canal in Panama*, currently on display in the Albert H. Nahmad Panama Canal Gallery, Smathers Library Building, University of Florida, Gainesville. Contact John Nemmers for information about visiting the Gallery. An online version of the exhibition is available at: exhibits.uflib.ufl.edu/AmericanCanal/.

March 7, 2020

Joint meeting of the Friends of the Panama Canal Museum Collection and Panama Canal Society at the University of Florida's Smathers Library in Gainesville, FL. Includes the grand opening of the 2020 exhibition in the Albert H. Nahmad Panama Canal Gallery *Are We Next: Fear and Social Roles in World War II*.

March 8-15, 2020

7-Night Eastern Caribbean Fundraising Cruise on Norwegian *Encore* with Friends of the Panama Canal Museum Collection. For more information, contact Condor Tours and Travel at 770-339-9961

June 24-28, 2020

Exhibit, Cultural Seminar, and Silent Auction at the Panama Canal Society Reunion at the Caribe Royale. Please contact Mickey Walker Fitzgerald if you wish to volunteer your time or items for the Silent Auction.

FRIENDS OF THE
PANAMA CANAL
Museum Collection
AT THE UNIVERSITY OF FLORIDA

